

UNIVERSITY OF WASHINGTON STOREFRONT STUDIO CITY OF SULTAN SPRING 2022

Edited by:
Jim Nicholls
Christine Olshefsky



CITY OF SULTAN.....3

Introduction..... 3
Historic Main Street..... 7
Flooding..... 9
Sustainability..... 11
Enhancement Strategies and Assets..... 15

01. FEED BUILDING AND PARK.....17

Site Analysis..... 19
Feed Building Block and Recreation Park..... 23
Recreation Park Precedent..... 27
Adjusting the Right of Way..... 35
Feed Building Revitalization..... 41

02. WARNER BLOCK.....53

Site Analysis..... 55
Paved Amphitheater Park..... 63
Grass Amphitheater Park..... 69
Canopies and Awnings..... 75
Kiss the Sky Bookstore..... 79

03. MAIN STREET.....81

Main Street Enhancements..... 83
Welcome Corner..... 85
Parking..... 87
Furniture and Lighting..... 93
Mural Program..... 107
Community Clock..... 117

Sultan T-Shirts..... 119
Main Street Open Houses..... 121
Special Thanks..... 123

An aerial photograph of an industrial site. A large, irregular area is outlined in green. This area includes a large grassy field, a paved road, a parking lot, and several industrial buildings. The text '01. FEED BUILDING AND PARK' is overlaid in white on the grassy field. The surrounding area includes residential houses, other industrial buildings, and a multi-lane highway at the bottom.

**01. FEED BUILDING
AND PARK**



02. WARNER BLOCK



03. MAIN STREET

The goal of this community project was to assist the Sultan community in envisioning strategic improvements to existing Main Street assets: the commercial buildings and streetscape infrastructure in the historic business district, including the connections to adjacent parks and residential areas.

The focus was on developing strategies for reactivating historic Main Street, through improvements on city land and buildings, including community supported proposals for lighting, public art, seating, planting and pedestrian amenities. Nature is returned to the Main Street enhancing the environment for community and visitors. And potentially assisting with storm and flood water.

The Studio paired the findings of the UW Evans School 2021 Study, with the opportunities of City owned property and parkland. The community was engaged through four Open Houses and on-site field work. Public votes and comments on projects were used to edit outcomes. Three sites were selected as examples of the larger opportunities and constraints; the Historic Feed Building and Park, the Warner Block, and Main Street.

Jim Nicholls

Director, UW Storefront Studio
Teaching Associate Professor
Department of Architecture, College of Built Environments

This photo post card is of downtown Sultan, on Main Street looking West. The bridge going over the Sultan River can be seen in the distance. The card was sent by John F. Warner to his wife on March 11, 1908.

**note: colorization is not original*



HISTORIC SULTAN



KATTERLE

Roofs



Shed Roof



Gable End

Western False Front



Colorful stripes



Tall Windows

Materials



Wood



Brick



Cornice



Extended Wall

Pedestrian Cover



Canopy

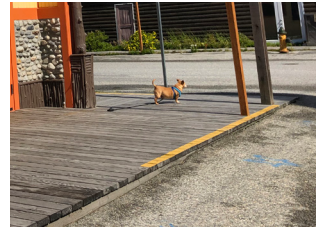


Awning

Others



Historic Signage



Boardwalks



Balconies



Porch



Transparency



Facade Rhythm



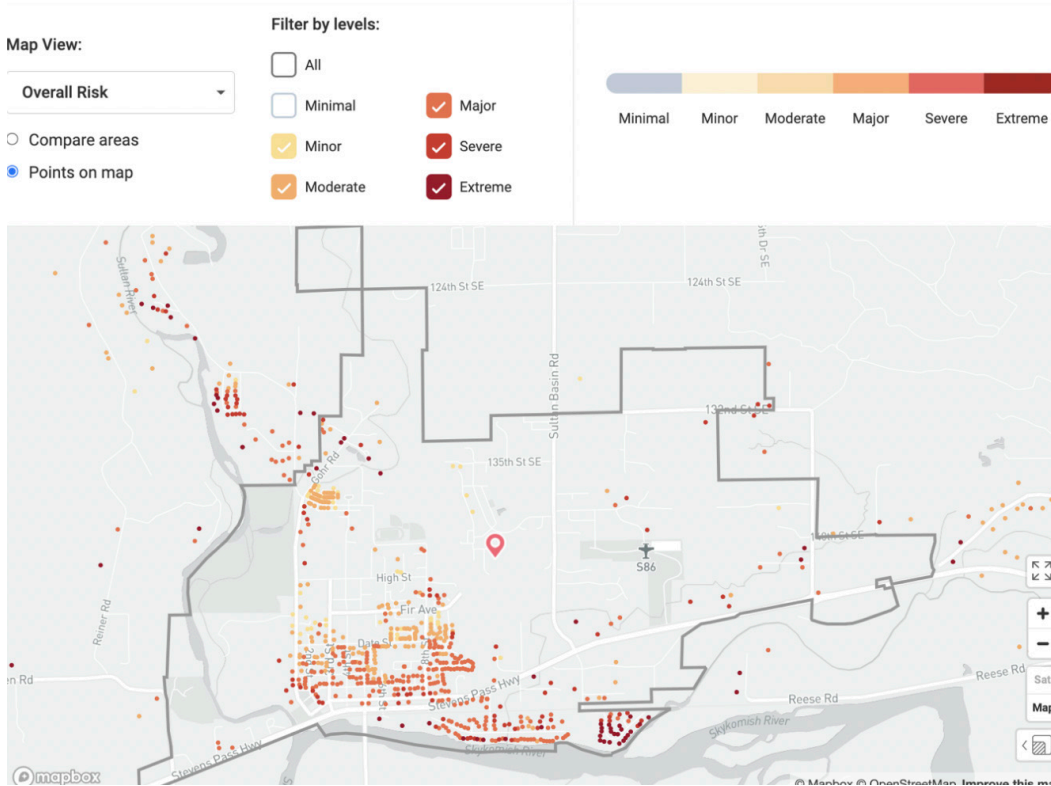
Architectural elements from historic Sultan can be seen on the Sultan City Hall and the Sultan Information Center. The Main Street style consists of western false front architecture with repeating cornice brackets, fascia, and soffit. Buildings had extended balconies, overhangs supported by columns, and canopies supported by tension cables. The facades on the wooden cladding buildings consisted of colorful window frames, long horizontal lines, and short vertical lines in between. Brick buildings have engaged columns, rows of corbelled bricks, and different colors.

Architectural Elements from Historic Sultan



Flood Severity Map

CITY OF SULTAN Flooding



Flooding is a significant constraint in the City of Sultan. The Sultan Storefront Studio 2022 researched and analyzed the flood problem in the region and proposed solutions to reduce the impact and damage. They can improve the landscape of Sultan and offer interactive activities with water for children. We were inspired by precedents in Copenhagen and Netherlands where flooding from deluge rain events is becoming common.

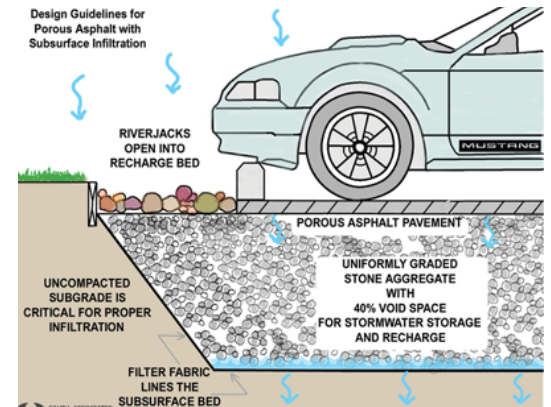


Permeable Pavement

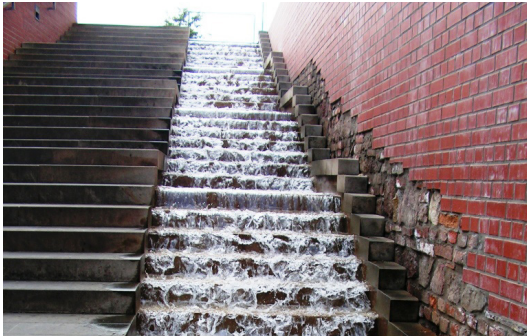
- Porous pavement
- Need stone subbase in cold environments
- Reduce storm water runoff infiltration
- Improves water quality
- Save cost on the storm water management system

Natural Shading

- Design parking lot around the trees already planted in Warner Block
- Leaves block the summer sun and provide shading
- Winter sun warms the parking lot when the leaves are gone
- Environmentally friendly
- Low cost
- No waste



Water Staircase/Ramp



Drainage in Amphitheater

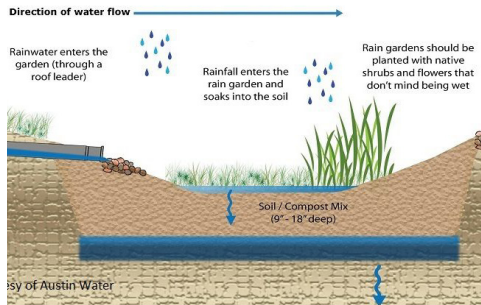


Walkway in Parking



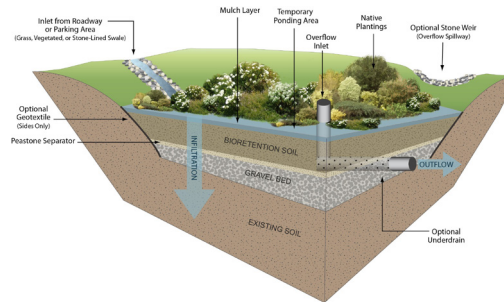
Rain Garden

- Depressed area in landscape
- Collect rainwater from roof, street, and driveway
- Grasses and flowers = cost effective and biophilic
- Reduce runoff water
- Filter pollutants in runoff
- Provide food and shelter to insects, birds, and other wildlife



Bio-retention

- More complex rain garden with drainage systems and amended soil
- Controls the water quality of runoff water
- Drain system of released into a subsoil below the soil bed
- Filter a wide range of pollutants, including suspended solids, nutrients, metals, hydrocarbons, and bacteria in runoff



Sultan Storefront Studio 2022 would like to offer some sustainability strategies that Sultan can incorporate into the city. People can interact with nature and enhance the landscape.

For the heavy rain and flooding, rain gardens or bio-retention ponds can be installed into parking lots or corners of streets to collect water. This treatment also provides a space to grow plants and bring more greenery to the city. Choosing native plants over invasive plants protects local plant species' diversity. Local plants are more resistant to local weather and need less care and resources than invasive species to grow.

Sultan is surrounded by nature, and bringing nature to the city allows people to enjoy and experience its beauty. Trees are natural shading devices that block the summer sun and cool down the area. Drainage into the amphitheater fills the space with the sound of running water and children can splash in the puddle.

Copenhagen Precedents



Copenhagen Strategic Flood Masterplan by Ramboll Studio Dreiseitl

Netherland Precedents



Drainage Basin Amphitheater



SuDS (Drainage Basin) in Tåsinge Plads by GHB Landscape Architects



Water Drainage Square in Rotterdam by De Urbanisten

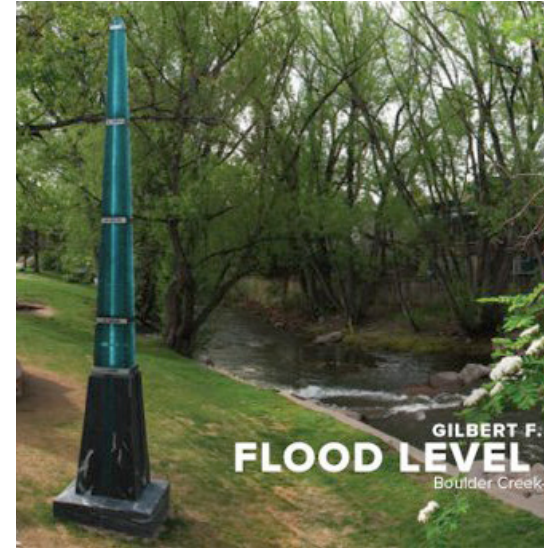
Flood Response Ideas



Floating Trees



Skate Park that can Hold Water



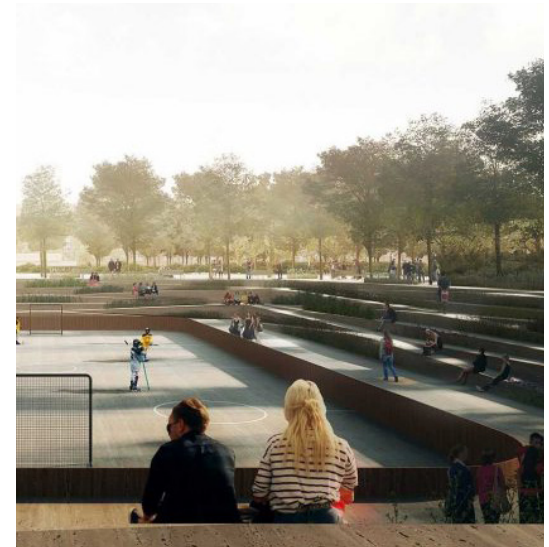
Public Art



Permeable Paving



Bioswales



Sunken Court that can hold water

Goal 01. Living Nature



Goal 02. Supporting Community



Goal 03. Hosting Visitors



ENHANCEMENT STRATEGIES AND ASSETS

Identifying Sultan's assets and proposing ways to strengthen them



01. Sultan sits at the confluence of two rivers surrounded by lush forests and alpine mountains. By bringing more nature to Main Street, Sultan can reinforce its status as a town perfectly nestled among the natural wonders of the Pacific Northwest.

02. Sultan hosts community events such as the weekly Farmers' Market which brings people together on Main Street. Building pedestrian focused streets and new amenities that serve people of all ages, abilities, and interests will continue to foster community.

03. Sultan's yearly Shindig brings hundreds of visitors to Main Street for a summer celebration. Developing a wayfinding strategy will help visitors find their way around the city. Hosting impermanent/movable events is a great way to utilize undeveloped parcels for visitor attractions.





01. FEED BUILDING AND PARK

Site Analysis	21
Feed Building Block and Recreation Park	25
Recreation Park Precedent	29
Adjusting the Right of Way	37
Feed Building Revitalization	43

Site Walking Connections



Sultan High School: 20 minute walk
 Sultan Middle School: 12 minute walk
 Sultan Elementary School: 9 minute walk



Sultan Boat Launch: 7 minute walk
 Sultan Osprey Park: 11 minute walk
 River Access and Swimming within 6 minutes walking



Adjacent to Sultan's Weekly Farmer's Market
 Connected to Sultan's Car Show and the Sultan Shindig



COLOR KEY

- | | | | |
|--|---|---|---|
|  Feed Building block |  Parks Spaces |  Main Water Bodies |  Main Roadways |
|  Commercial Areas |  Residential Zones |  Community Events/Spaces |  Pedestrian Bridge |



1. Skate Park



2. Open Lot



3. Feedlot Building

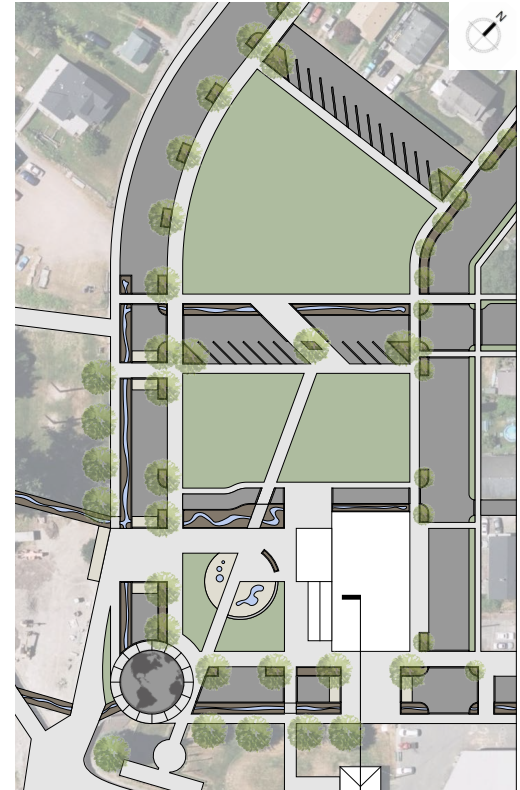
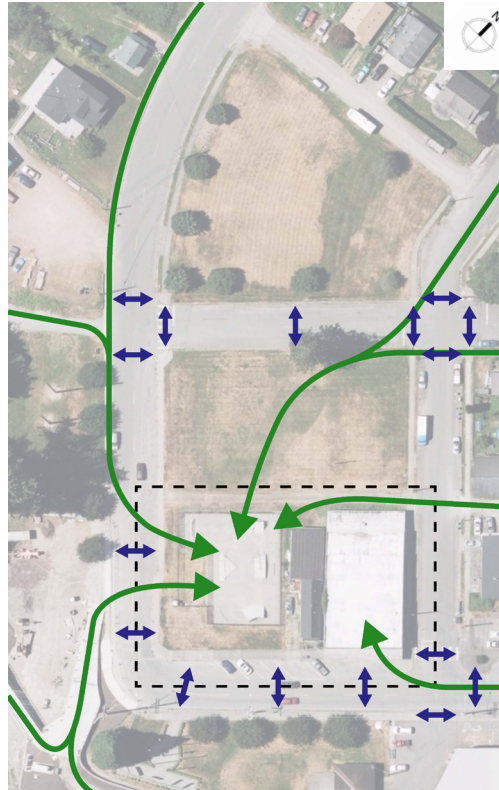
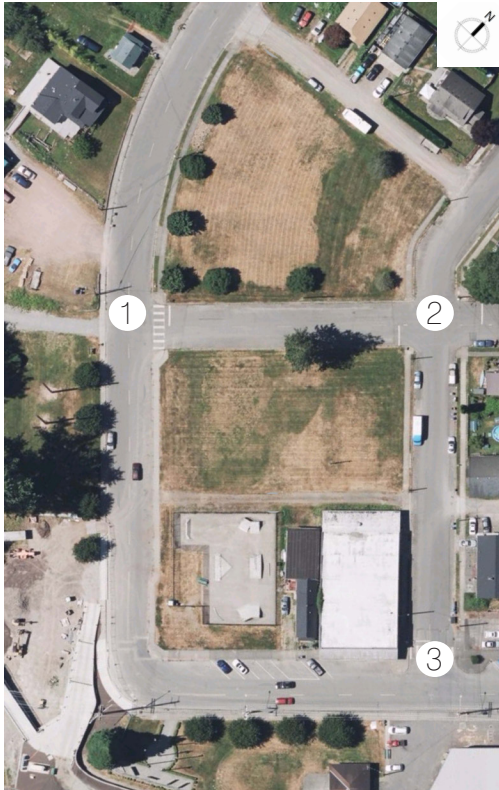
Project Goals:

- **Serve Sultan's Youth** - The site is located within walking distance of Sultan's three main schools making it an ideal site for after school activities.
- **Provide a Regional Attraction** - Highway 2 has a significant amount of traffic. Providing a regional attraction would encourage passersby to stop and take advantage of what Sultan offers.
- **Support Community Events** - Sultan already hosts unique community events such as the weekly farmer's market, 3 on 3 basketball, the Car Festival, and the Shindig. Having a designated event space would promote these events and create a sense of regional identity.
- **Boost Activity in Downtown Sultan**
- **Mitigate Flooding on the Site**

The feed building and nearby park are highly visible from the approach on Highway 2, serving as a threshold to the rest of Sultan. It is uniquely positioned at the end of Main Street with park access. The weekly farmer's market is hosted adjacent to the site, as well as other community gatherings, fundraisers, and festivals.

Feed Building Site Circulation

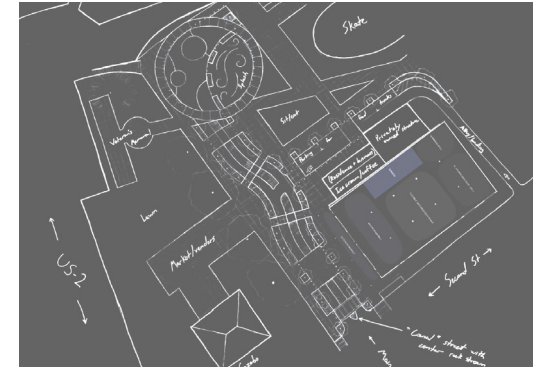
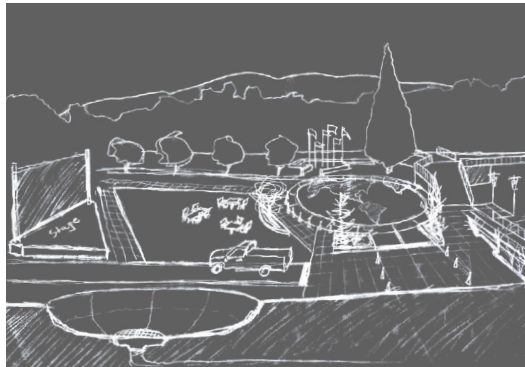
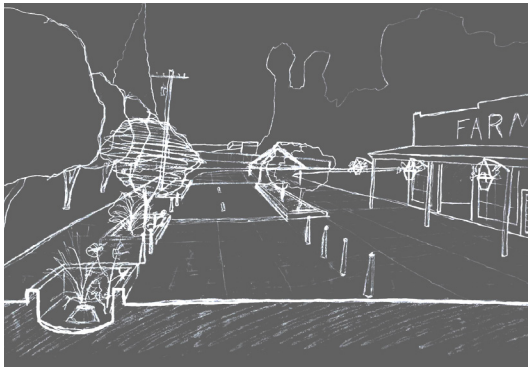
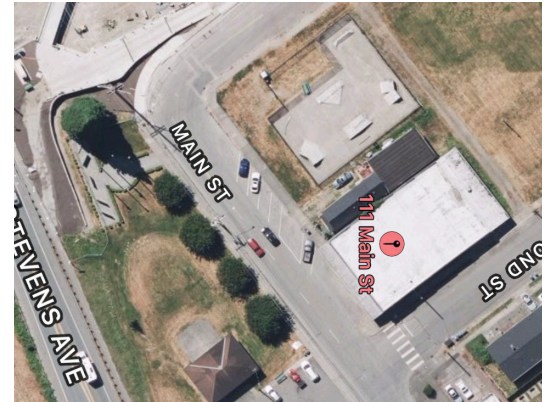
Currently the site is accessed by pedestrians at three main intersections with few crosswalks already in place. After identifying the existing assets and anticipated future needs of the site, additional needed crossings were located. The major pedestrian streams into the site are shown with green arrows. Important existing and needed street crossings are represented with blue arrows. Based off of the analysis, sidewalks and crosswalks have been placed to facilitate pedestrian movement into and throughout the site.



Feed Building Concepts

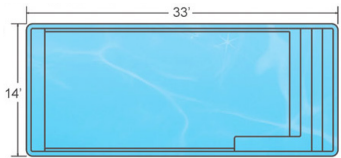
The Feed Building site sits between First and Second Street and stretches from Main Street at the south up to Ash Avenue at the north. On a series of site visits, initial concept sketches envisioned a future for the site and its relationship with the streets. By expanding on site amenities and street crossings, a more unified site was proposed with better connections to the existing park features on the other side of Main Street and First Street.

Early on in the exploration process, the potential for 111 Main Street to become a community asset was identified. With the existing farmer's market located just across the street, we began brainstorming ways to create a unified site that could serve as the main gathering place for locals and visitors in downtown Sultan.

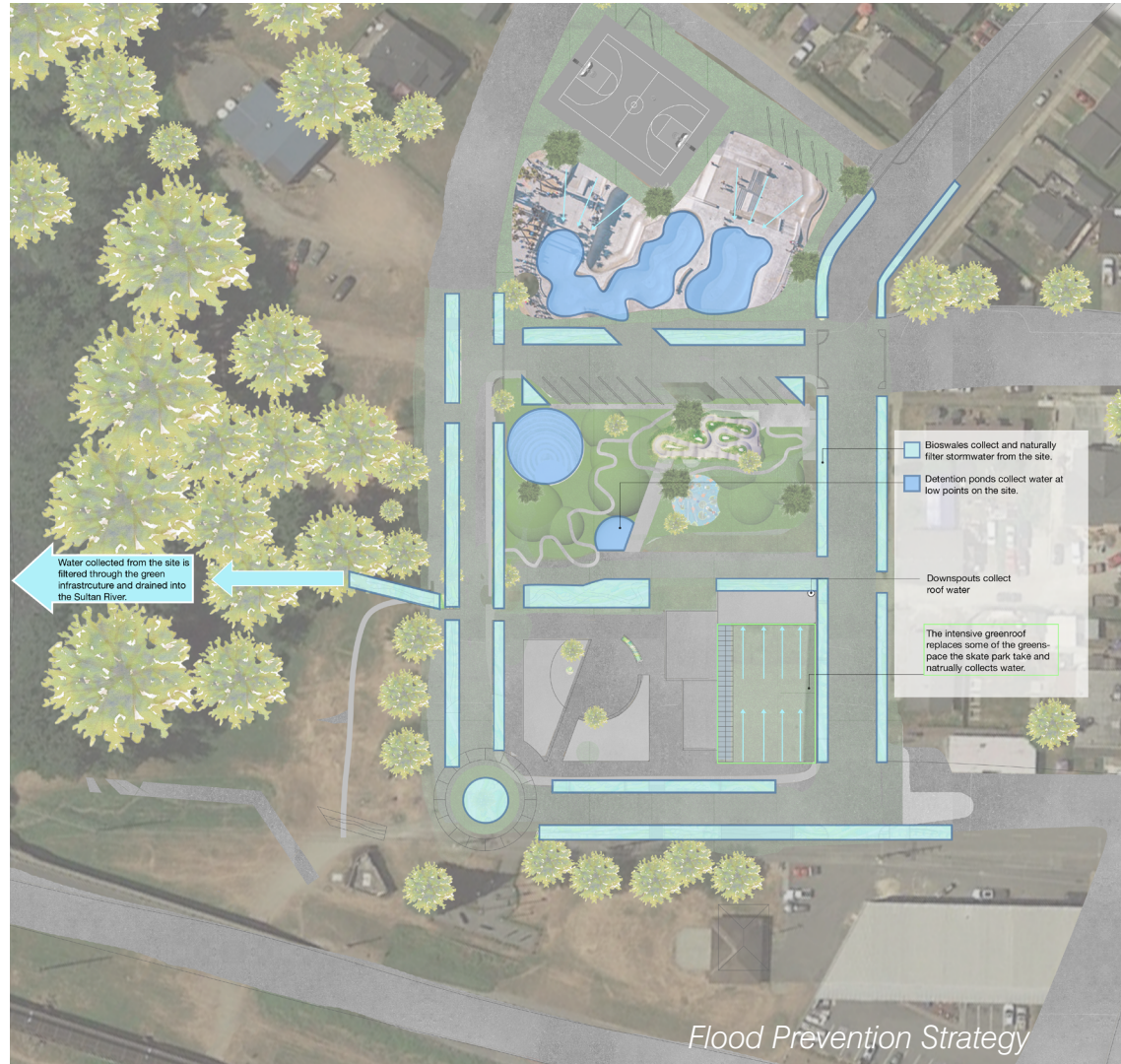


Flood Management Strategy

The recreation park manages flooding in Sultan by collecting and filtering water so it can be safely discharged into the Sultan River without causing pollution. Water is collected off the roof and naturally filtered in bioswales and dry creek beds which allow water to flow through the site. The skate park and earthworks adventure playground create dry-bottom detention ponds which can fill with flood water when necessary. The desired outcome is to reduce the likelihood of flooding in the local area. Based on analysis from similar projects this design would protect an area of 20 acres from the 100 year flood.



The skate park should collect about 2.5 million liters of water or about an Olympic-sized swimming pool. For this, 186,600 ft³ of dirt must be displaced which in turn will be used to build up the pump track.



FEED BUILDING BLOCK AND RECREATION PARK

Site Analysis



The Feed Building Block could manage flooding in Sultan by creating a mixed-use recreational area that serves the community and provides an attraction for visitors passing by on Highway 2. The flexible recreation park provides a **community gathering place, mixed-use recreation zones, and an event space** that enhances community events such as the weekly farmer's market and the Sultan Shindig.

The project's goal is to manage the issue of flooding around Sultan's main street while serving the community and making a lasting positive impact. The programs include an Indoor Recreation & Community Space, an outdoor Play/Eat/Gather area, a flood mitigation recreation park, and a regional attraction skate park, and sports courts.

Neighborhood Scale



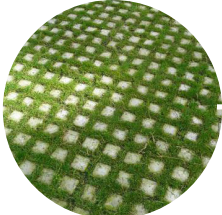
Option 1

Regional Scale

This design option includes a regional-scale skate park incorporating the open lot to the north of the site. This scale of skate park would create an attraction in Sultan for the surrounding area and beyond.

Plan Elements

Permeable Paving



Bioswales



Dry Creek Bed



Option 2

Recreation Park Features

The Recreation Park creates a regional attraction in Sultan and serves the community. The skate park will draw visitors into the town to use the amenity. The park features recreation for all ages and has sports courts, a pump track, splash park, and a playground. The site focuses on serving the youth of Sultan, and is walking distance from the town's main schools, offering an ideal location for after school activities. The recreation zone connects to the adjacent parks and brings nature into the Main Street experience.



1. Flood Mitigation Skate Park



2. Basketball Court



3. Amphitheater



4. Pump Track



5. Splash Park



6. Play Ground



EARTHWORKS ADVENTURE PARK

Existing Precedent



Mill Creek Canyon Earthworks Park, Kent, WA

The outdoor recreation is designed for the enjoyment of local residents as well as visitors. The site is prone to flooding and the landscape is designed to mitigate storm water, using techniques seen at the Mill Creek Canyon Earthworks Park in Kent Washington. Green infrastructure in the form of dry creek beds and bioswales filter water so it can enter the Sultan River without causing pollution. The skate park creates a dry-bottom detention pond to collect and treat water to prevent flooding around the site. The mounding landscape collects and filters storm water. The park's ultimate goal is to serve the local community and make a lasting positive impact by alleviating flooding.

The historical feed building creates an indoor recreation space that makes the park available through all seasons, while passively mitigating flood water through intentional landscape design.



Bird's-Eye View of the Recreation Park



Amphitheater

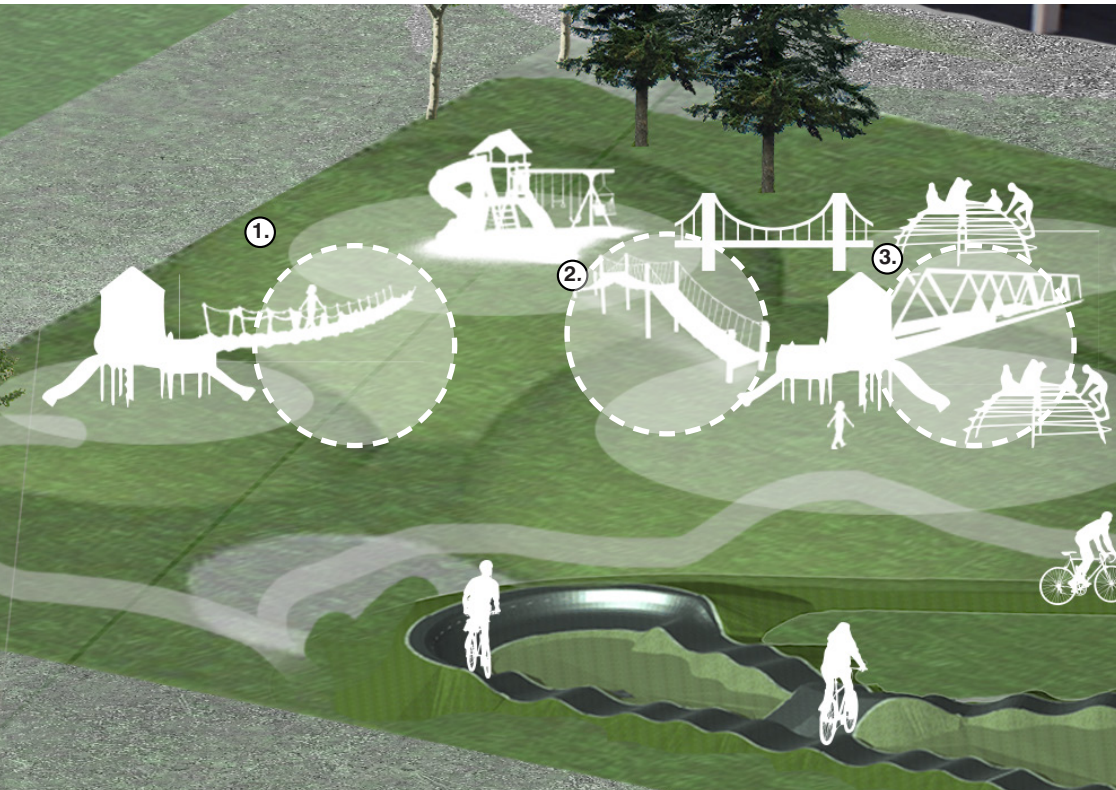
The amphitheater serves as an exterior gathering place for Sultan and could host music events and performances. It additionally creates a place to sit and rest. The amphitheater creates a low point in the park which collects water and serves to keep the rest of the park free from flooding. In the instance of the 100 year flood, the sunken amphitheater can hold water as a detention pond.





Adventure Playground

The adventure playground park creates an interactive play space inspired by historic bridges in Sultan. The mounds of the earthworks park are connected by play structures modeled after three significant bridges in Sultan's history.



① Sultan River Highway 2 Bridge



This photo is from 1920 showing the Sultan River joining the Skykomish River. The town of Sultan is to the immediate left.

② Sultan Suspension Bridge

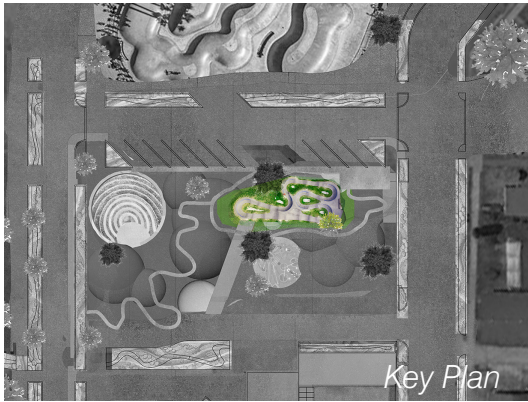


This is one of the earliest photos of Sultan showing a suspension bridge that connects to main street. Highway 2 would come many years later.

③ Highway 2 Bridge



This bridge was created when highway 2 connected to main street. The later and current bridge was moved just to the right of the old bridge and aimed around the town, more parallel to the train tracks.

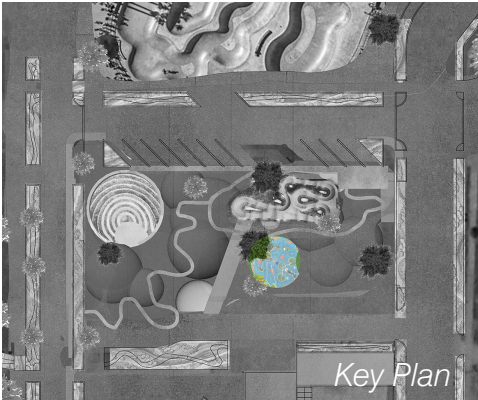


Pump Track

A pump track is for wheeled sports equipment, and when ridden correctly does not require pedaling or pushing, but a "pumping" action to maintain momentum.

This innovative play park amenity can be made out of several materials including dirt, asphalt, and concrete as pictured. The track can be incorporated into the landscape to integrate with the flood mitigation adventure park. Low points on the track can function as bioswales to filter the water and connect it to the drainage systems to the Skykomish River.





Splash Park

The splash park mimics a river and integrates with the earth works park. The splash park is a place for children to play and the community to cool off during heat waves in the summer.

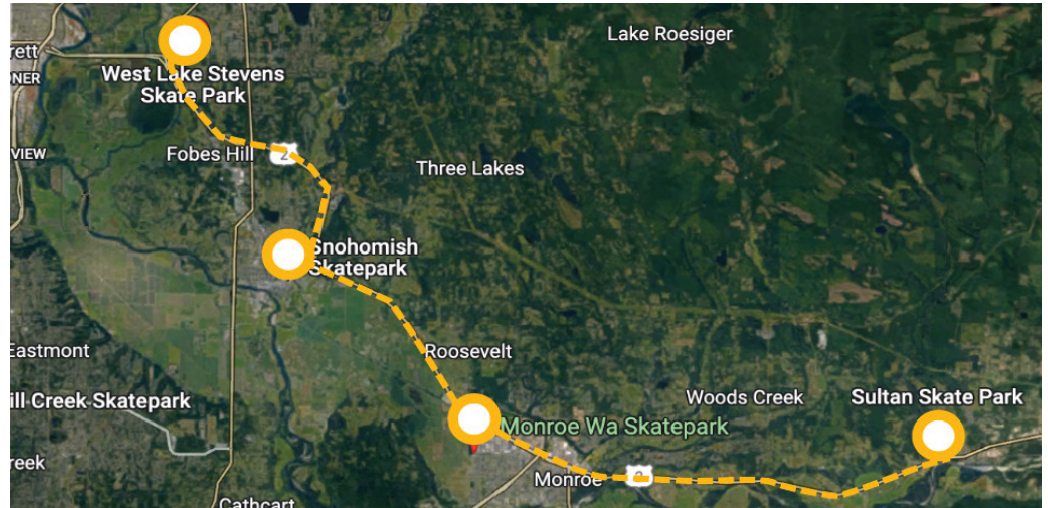




Skate Park

Using the skate park is fun for all ages and a deeper, more permanent bowl shape is classic for smaller skate parks. One end is a bowl where onlookers can gather or parents can keep watch, while the other end has smaller rails or individual ramps for practice. This bowl shape is also a possible flood-season adaptation for flood water mitigation or retention. The Skate Park is intended to have an atmosphere that will feel like an extension of the river park nearby and will have similar elements.

Existing Skate Park

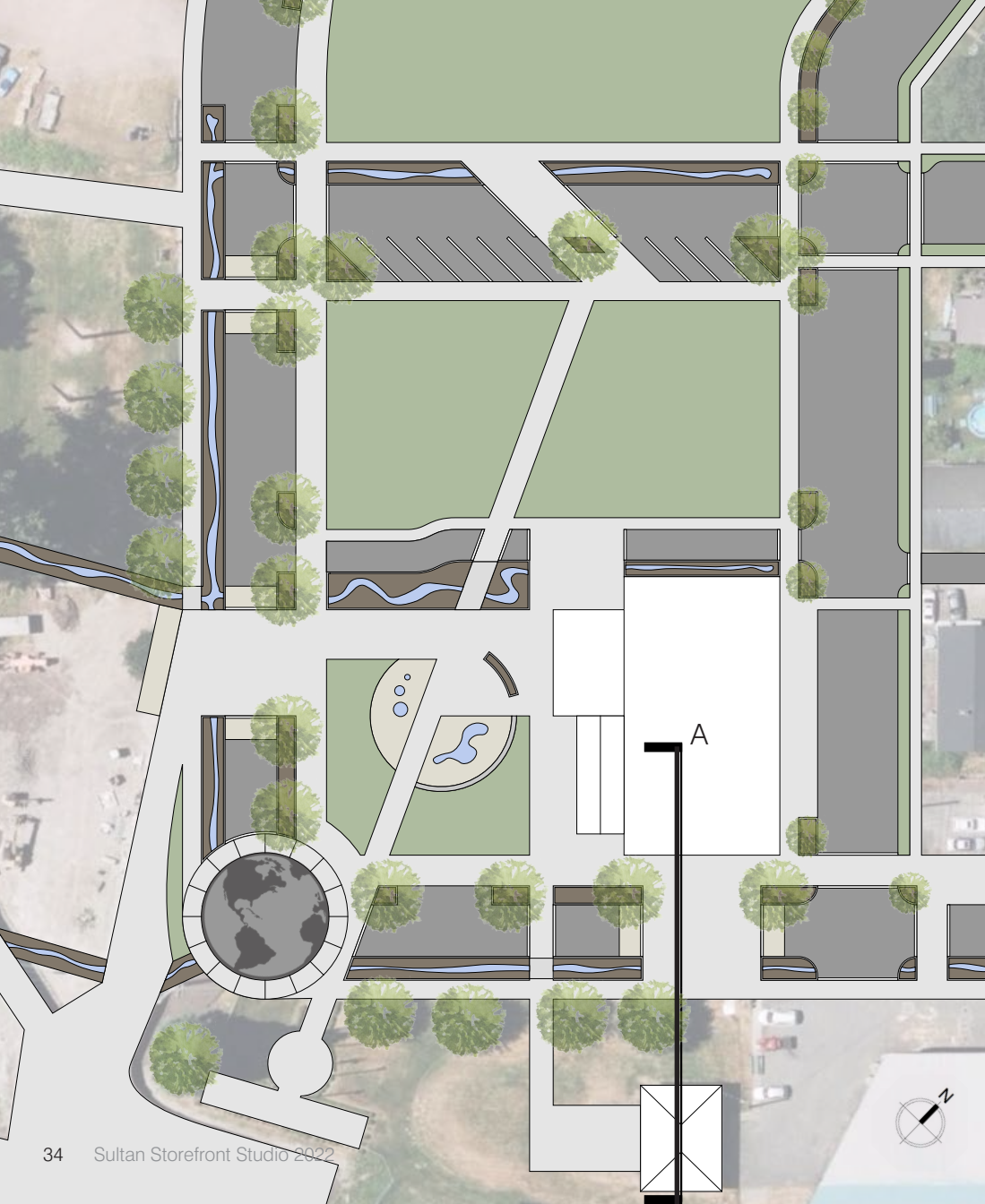




Regional Attraction

Regional skate parks work best when they are easily accessible from a nearby highway. This makes Sultan a perfect location to have a regional park. This page contains an image of the nearby skate parks and Sultan's relationship to the nearby highway. Sultan's skate park would also be visible and easily accessible from Highway 2.

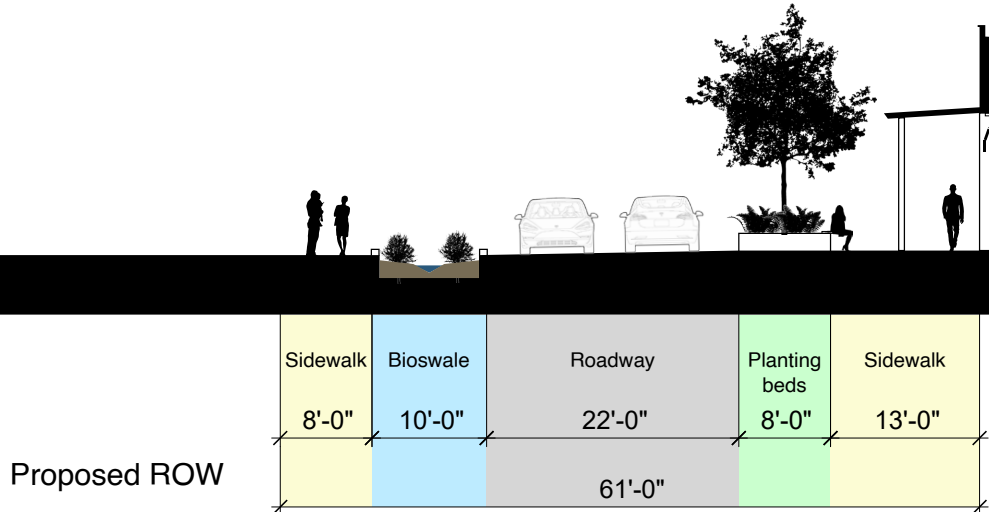
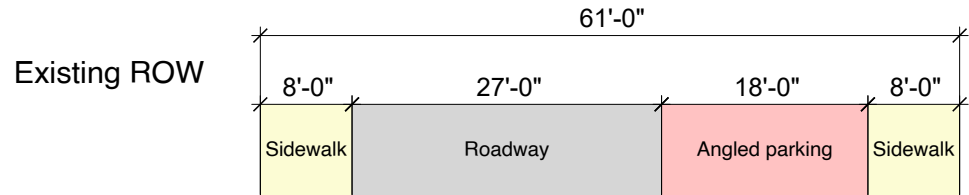




ADJUSTING THE RIGHT OF WAY

Improving visitor experience by adding greenscaping and widening sidewalks

By adjusting the existing right of way, safety and user experience will be improved at Main Street. Planting beds and bioswales separate the cars from the people by providing a buffer of greenspace on either side of the street.





Cross Section of Proposed Water Mitigation



Pedestrian Precedents

The pedestrian experience of Main Street at the Feed Building site will benefit from people and plant focused strategies. Bioswales and planting beds will collect and filter runoff from the street while bringing additional greenery to the site. Raised crosswalks will improve pedestrian safety and slow vehicles in high trafficked areas. Wider sidewalks will provide spaces for people to sit and gather.

Main Street Pedestrian-ization Strategies







Site Enhancement Strategies

Unifying the Feed Building site with the existing park amenities is a top priority. By adding additional crosswalks to Main Street, people are encouraged to explore the area while feeling safe from passing cars. Additional amenities such as eateries, a splash pad, and seating areas encourage visitors to come and enjoy the site. During events such as the farmers market, the street is easily closed to cars creating the sense of one continuous park across the site.







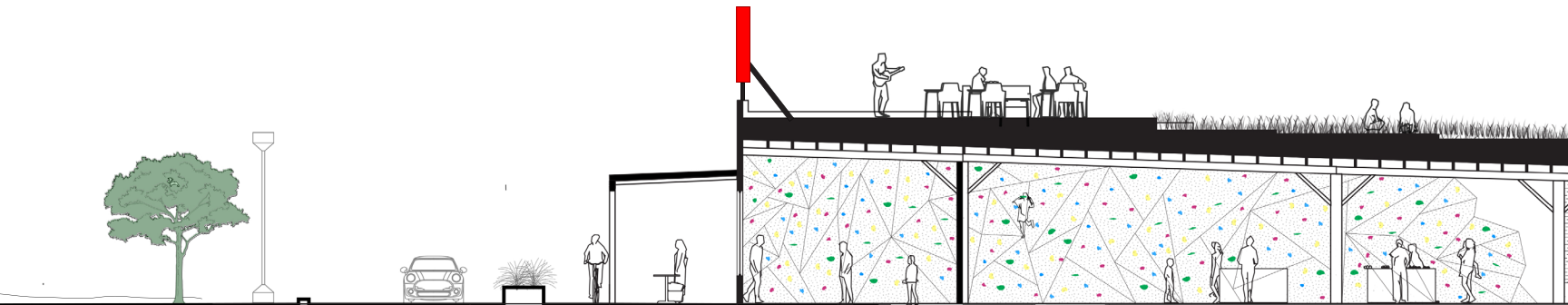
Project Goals:

- Flexible Market Space
- Climbing Gym
- Cafe
- Restroom
- Rooftop Deck/Bar

The feed building is a highly valuable building in Sultan with great potential to serve the community. It is seen on Highway 2 serving as the threshold to Sultan. It is in the prime position to display a 'Sultan' sign drawing in visitors to Main Street, just one street off of the highway. The feed building is in the flood zone and is likely to flood often in the future. We are proposing flexible programs that are able to move out of the building when it is flooding.

Feed Building Exterior

The feed building has opportunities to be used for a variety of programs. These programs are flexible and allow for the space to be used for many different purposes. The building served the entire Feed Building Block, Sultan community, and Sultan visitors. The building acts as a hub for the block with a restroom that serves the skate park, splash park, pump track, amphitheater, and much more!



Rainwater Catchment

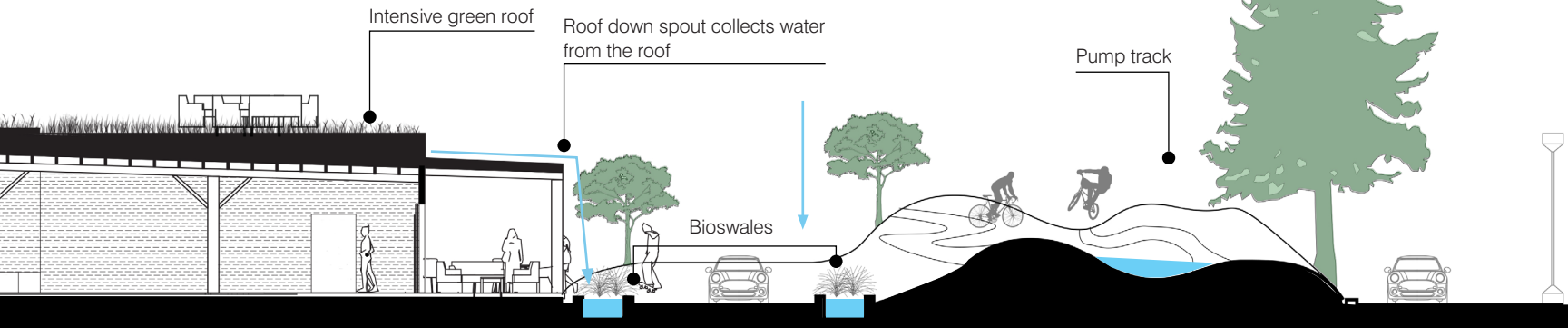
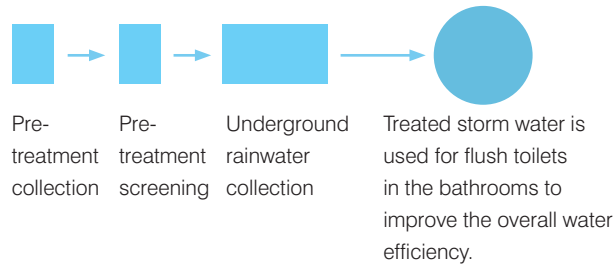
Rainwater gets collected after it passes through the intensive green roof through downspouts. Water on the surrounding landscaping is collected through bioswales. This water is collected and some is diverted away from the building while the majority is treated and reused in the building.

Building Flooding

The feed building is at risk of flooding during the wet months. For any design implementations, water management must be at the forefront of the design. Water management needs to be implemented through the building and surrounding landscaping to minimize the flood water entering the building.

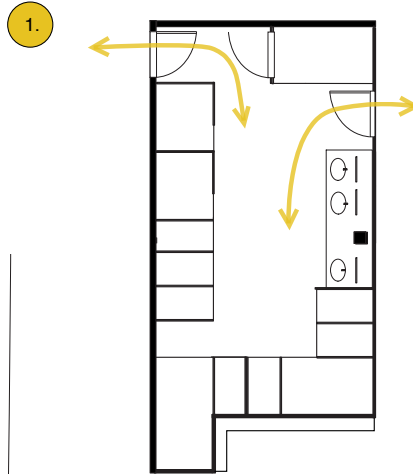
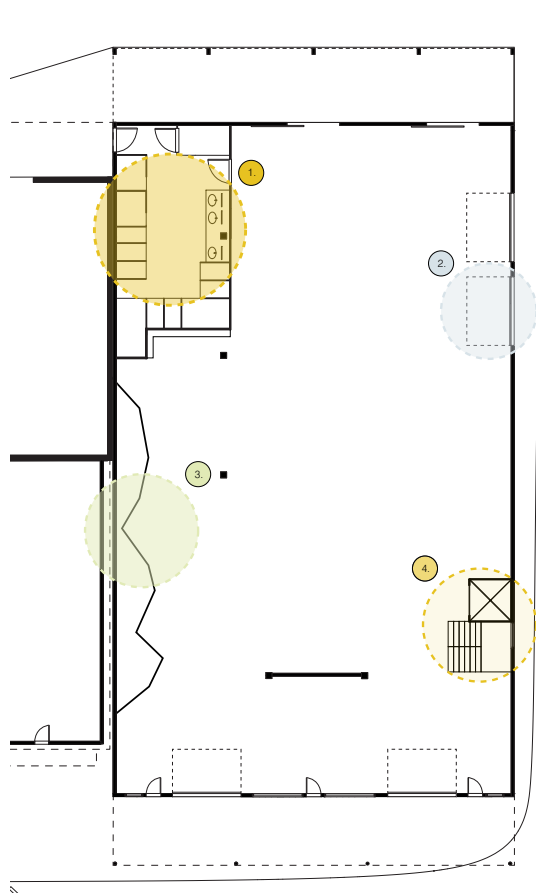
Building Water System

The Feed Building's retrofit carefully manages water and treats water to serve internal grey water needs.



Additional Assets

The feed building creates a space for everyone living and visiting Sultan. We have introduced some permanent aspects to the building that will aid in serving the community. These assets include an ADA accessible gender inclusive restroom, additional garage door, climbing wall, and stairs and an elevator leading to the roof.



These restrooms plan to include 11 stalls, 4 of which are ADA accessible. The restroom will be available to the entire park with two entrances: one from the exterior and an entrance from the interior of the feed building. There is also a storage area for easy access to cleaning and janitorial supplies.



The extra glass garage door allows for the market to open up and bring a flow of customers from the exterior to interior. It also allows more light to get into the building.



The climbing wall is a permanent asset that brings the outdoor activity aspect of the Feed Building Block indoors. It is a vertical asset that allows for flexibility in the rest of the building during market days or other events.



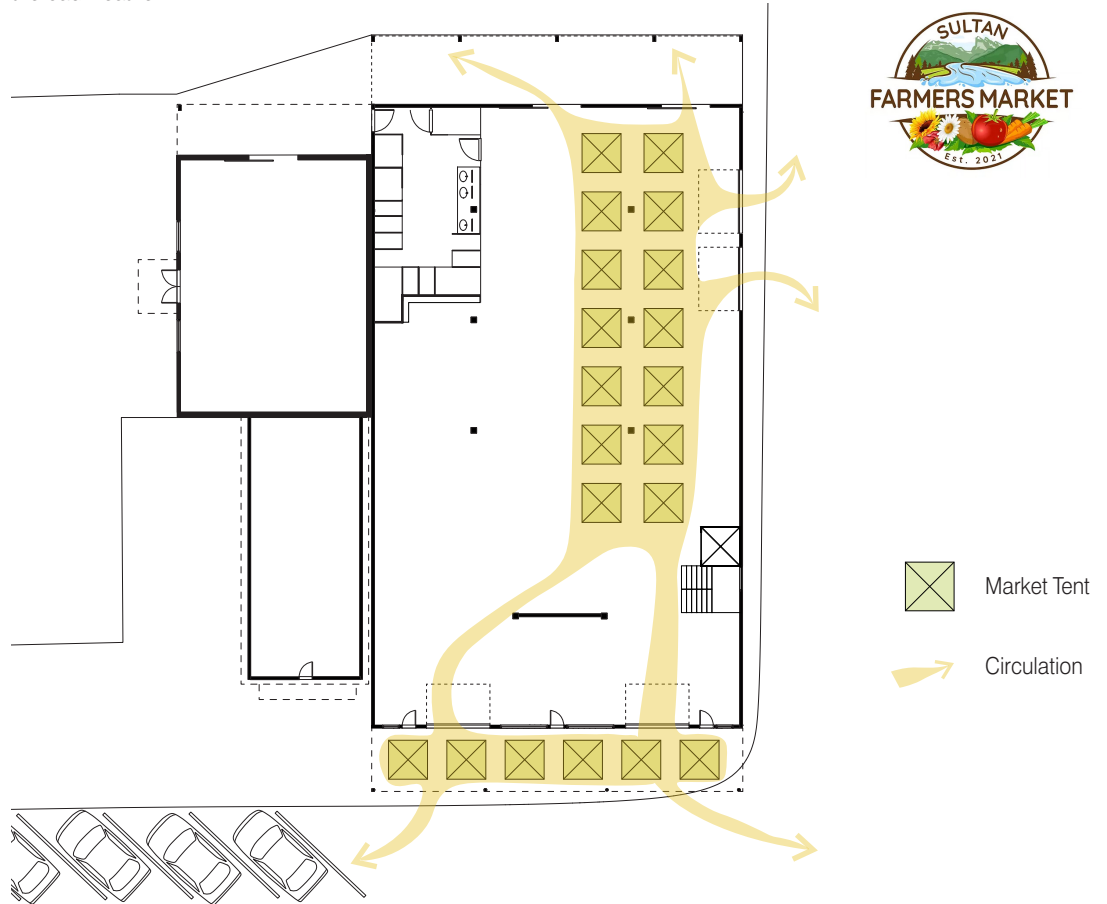
The vertical circulation allows for access to the roof. The open stairs creates fluidity between the floors while the elevator allows for ADA access.



Indoor Farmers Market

The feed building is located on the block of Main Street that the Sultan Farmers Market takes place on. The feed building is a large enough space to fit at least 14 10ft x 10ft market tents. This would allow the farmers market to take place inside the feed building and spill out into the street. This would be exceptionally beneficial during the cold, wet months when people do not want to be out in the bad weather.

It would also allow more vendors to join the market and it would be more desirable to visitors passing through. The tents would still allow vendors to occupy their individual spaces, but would create circulation from the entrance into the building to explore the rest of what the Feed Building Block has to offer.





Farmers Market Perspective

The interior markets offers a warm welcome to visitors and creates a safe, covered area for vendors to sell. These tents are easily moveable in the case of a flood or another event in the building, making this program flexible and potentially very cost effective. Vendors could

also provide their own removable tents, similar to the outdoor markets.



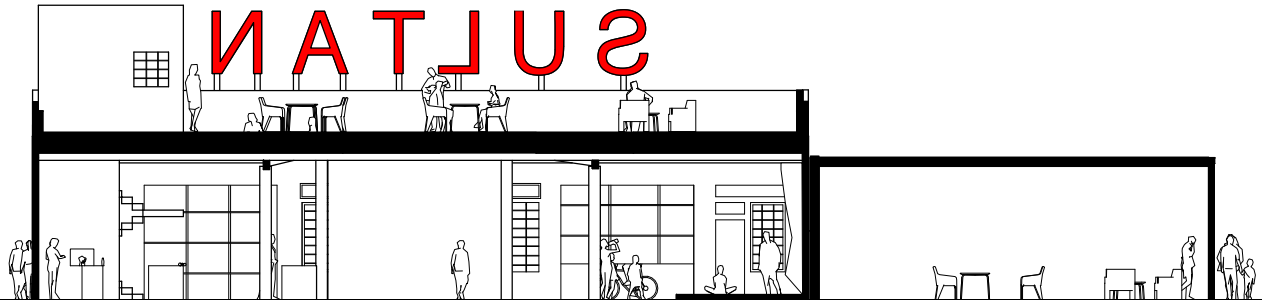
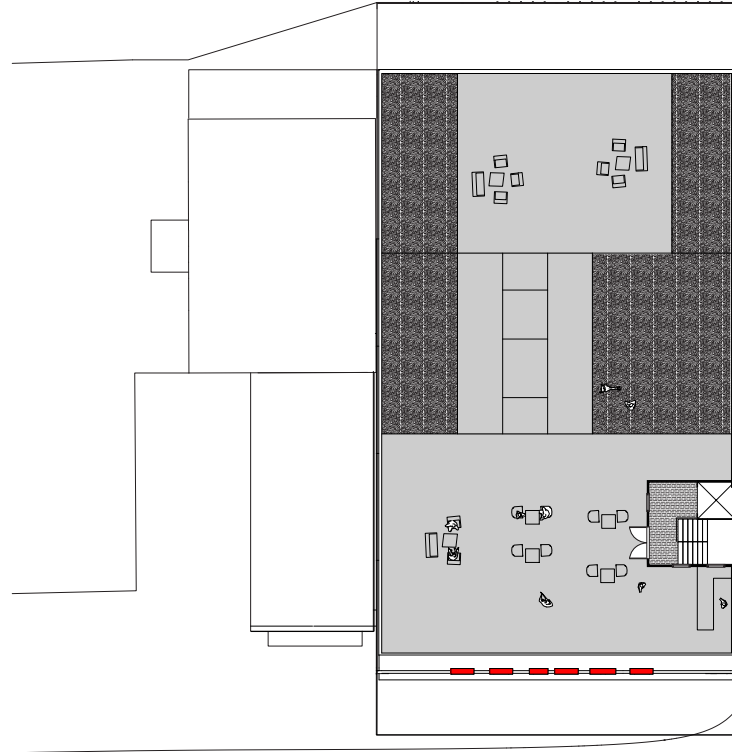
Climbing Wall Perspective

Sultan is in need of spaces for youth to gather after school and on the weekends. In Sultan, there are currently limited spaces for indoor athletics. This space provides a safe place for kids and young adults to gather and gain a new hobby. Sultan is located close to some

natural outdoor climbing areas, drawing visitors through Sultan. This would be a great place to stop, train, and enjoy the other amenities available.

Accessible Roof

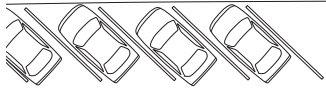
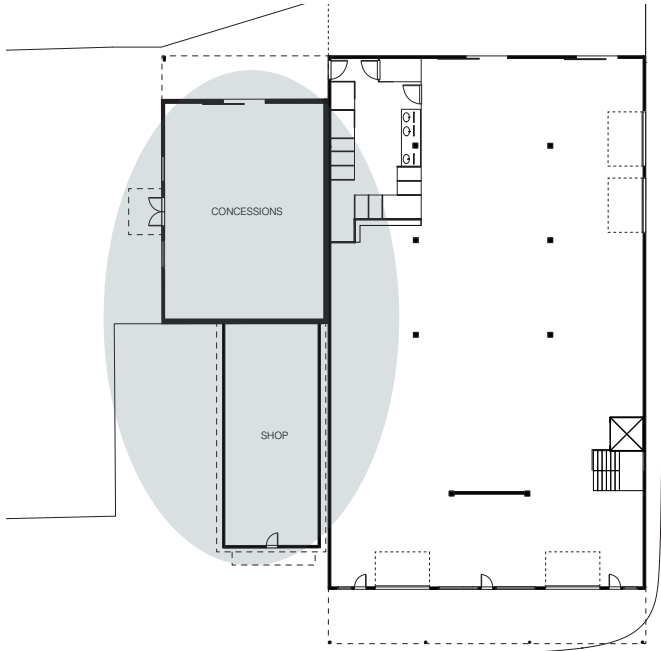
There is potential to have an accessible roof on the building. This would consist of a front and back seating area, connected by stairs and two ramps, and lined with xeriscaping to help with water control and collection. Building upwards makes sense in getting away from floods and allows for access to the beautiful Sultan views of the surrounding mountains. The front patio consists of seating and a bar and the back patio contains seating for looking at the activities going on below.





Future Expansion

The feed building neighbors two residential buildings. The current owner has expressed interest in converting the residential buildings into businesses. The front building is a great location for an outdoor shop to serve the activities taking place on the Feed Building block. The back building is in a perfect location to provide a variety of food to the community that can be enjoyed throughout the park.



Porch Seating



Concessions



Feed Building Perspective

The feed building retrofit provides an abundance of spaces for seating and enjoying the surrounding activities and views. The lower level seating is intended for seating for the concession stand, market, and cafe.

The upper roof seating is to enjoy a drink and the view of the mountains and the lower seating is intended for watching the surrounding activities.



02. WARNER BLOCK

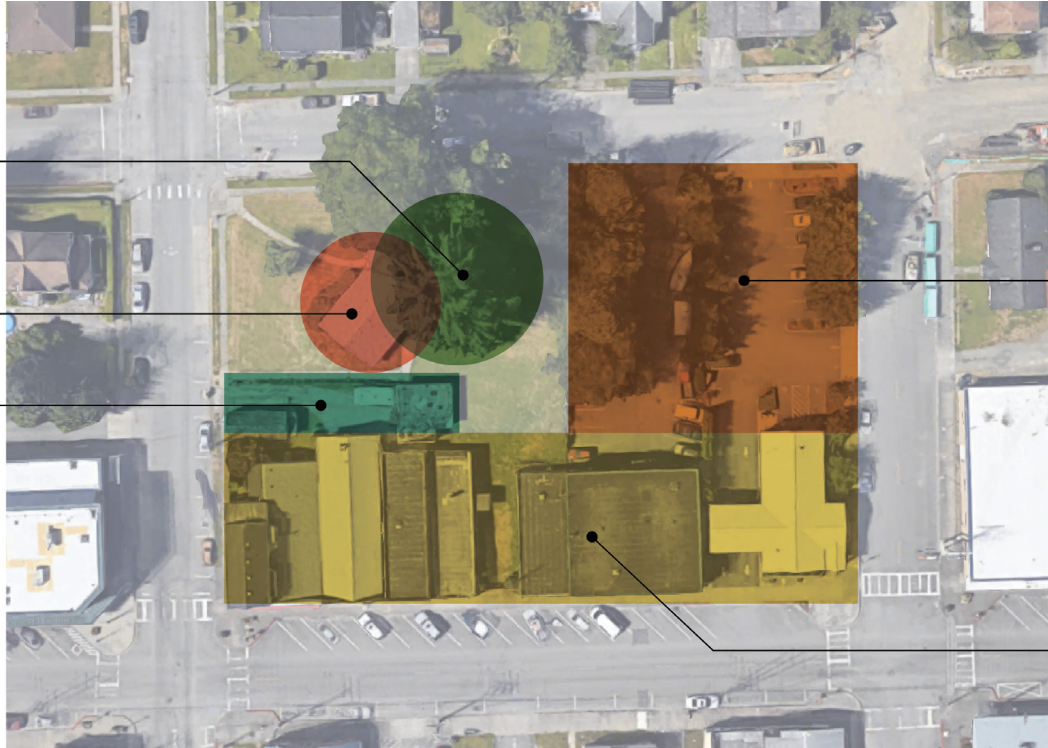


Site Analysis	57
Paved Amphitheater Park	65
Grass Amphitheater Park	71
Canopies and Awnings	77
Kiss the Sky Bookstore	81

Existing tall landmark tree growing behind the building

Building property owned by the City of Sultan

Alley with business access, behind Kiss the Sky Bookstore



Existing parking lot behind the bank (fenced)

Businesses along Main Street



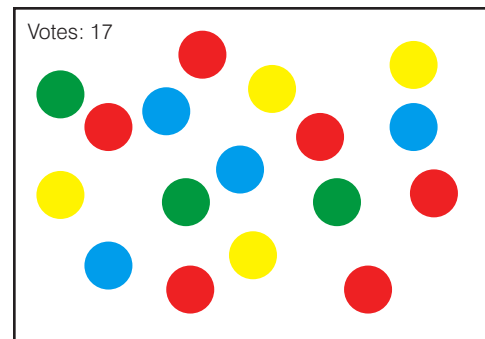
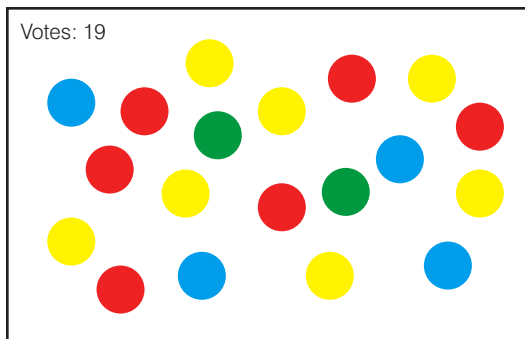
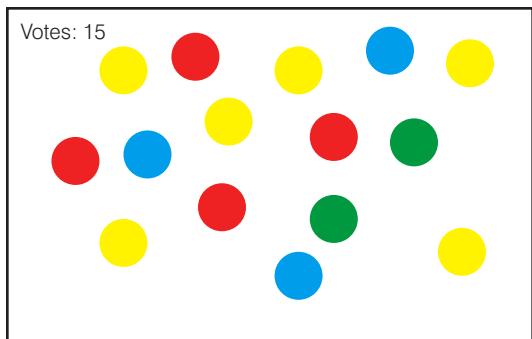
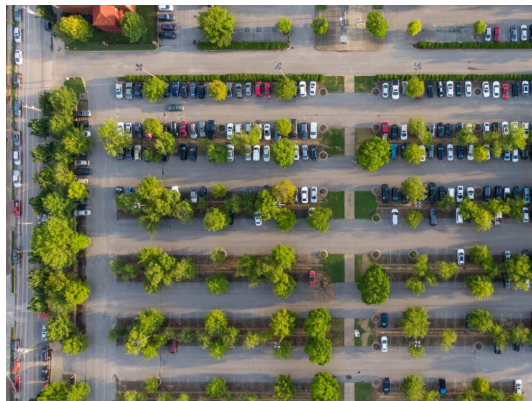
The Sultan Storefront Studio 2022 proposes design ideas with the goal of creating a space to bring the Sultan community together. The site, which the city has just purchased, has a former house set to be demolished better use the space. It has the potential to become a community lawn and public space.

Ideas for the community space were presented during an early Open House on Main Street. Community members responded positively to all proposed uses, with their favorites being Outdoor Dining and an Open Space or Amphitheater.

In developing this site plan, we compare two options, paved and grass, for the amphitheater park. Both options include water retention and allow for informal events and food truck picnics.

- Demolish
- Preserve
- Expand

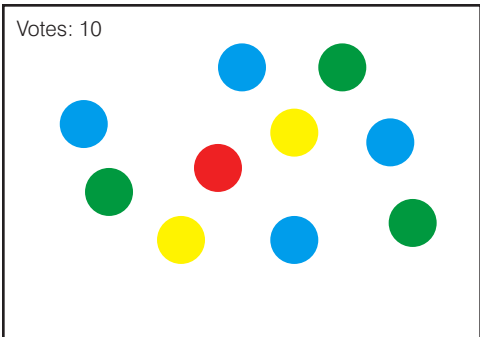
Program Ideas



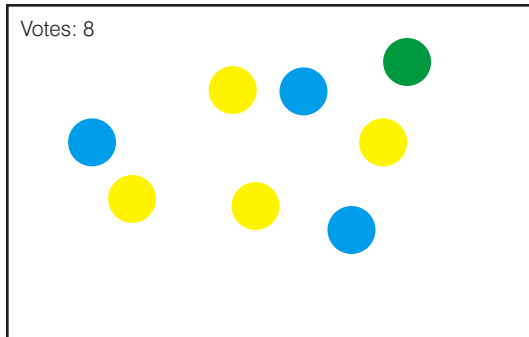
Sustainable Parking

Open Space/Amphitheater

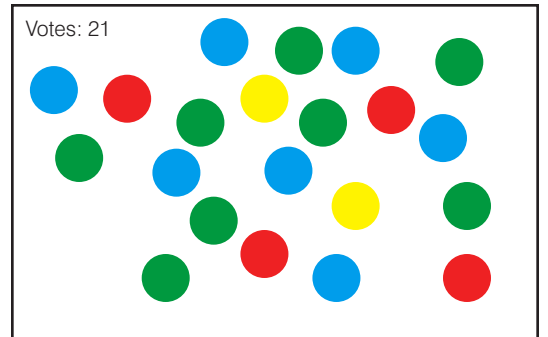
Food Truck



Farmers Market



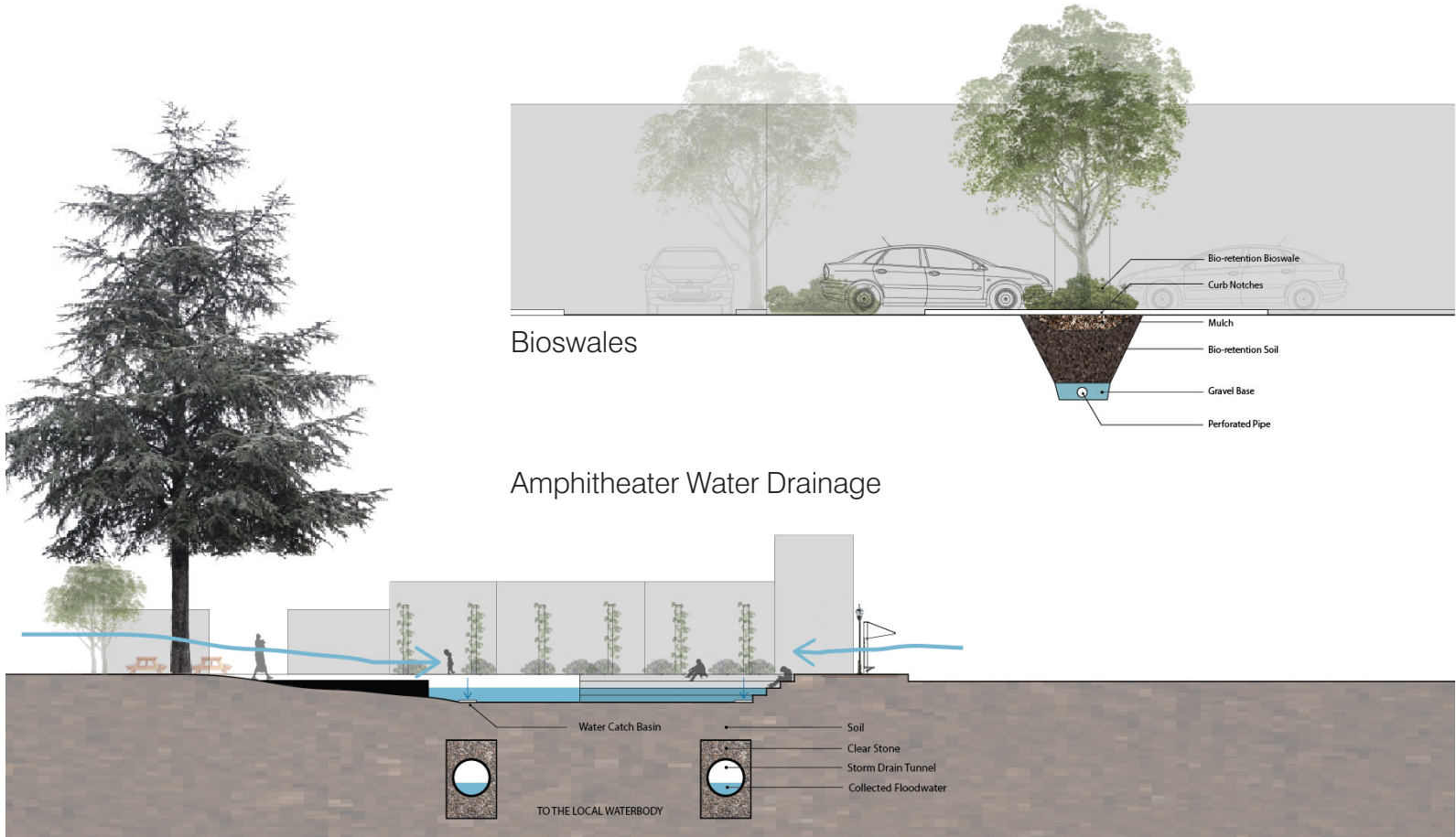
Outdoor Movie



Dining Space

Drainage System

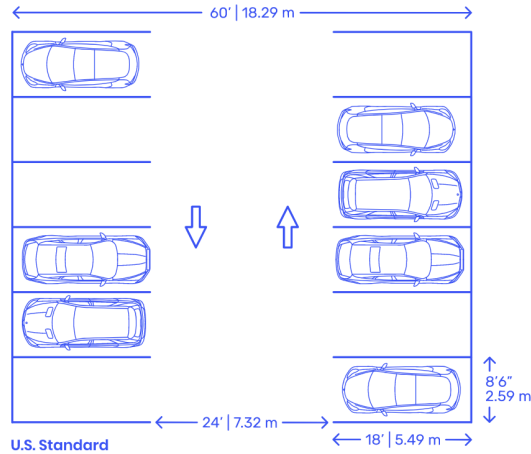
The amphitheater becomes part of the drainage system with rain and flood being common in Sultan. Bioswales will have a garden full of plants native to Washington. Water will flow down to a slope into the bioswales and amphitheater.



Existing Parking in Warner Block



Perpendicular Parking Dimensions



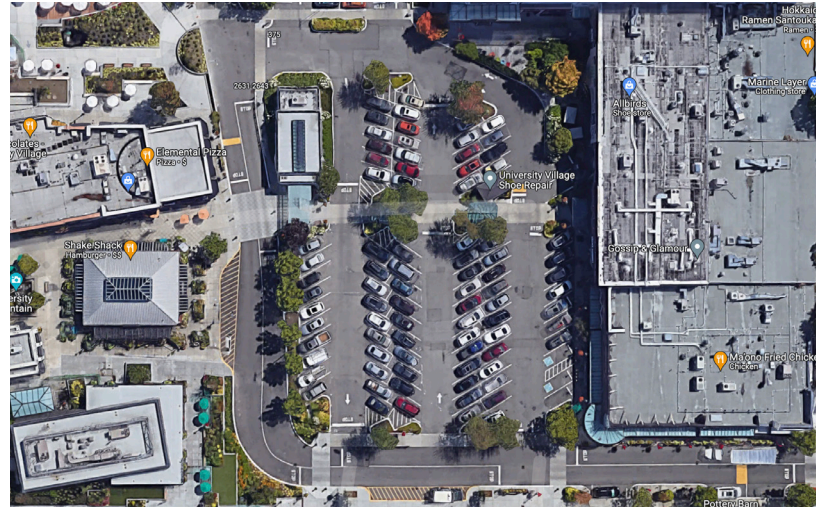
Parking Systems

The Sultan Storefront Studio 2022 added more parking lots to the Warner Block to replace some of the parking space on the Main Street taken up by street planting and seating. The existing parking lot has 27 parking space. Our parking lot has 39 parking space. There are 12 more parking space and the 3 of them are handicapped parking.

Parking Precedents



Gig Harbor Waterfront



University Village in Seattle, Washington

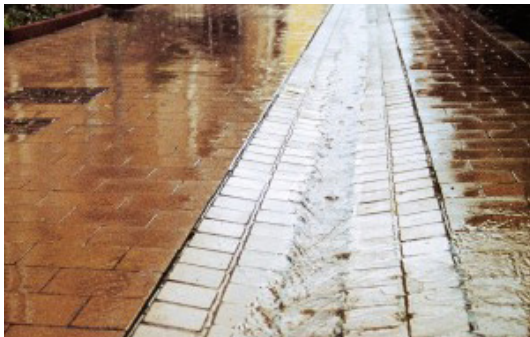
Amphitheater Water Drainage



Roof Scupper Waterfall



Water Staircase



Ground Water Drain

Community Garden



Planters next to Walkway



Narrow Rectangular Planters



Separates Walkway and Driveway

Language of Warner Block

Consistency in furniture and arrangements makes the whole Warner Block look unified. Sultan Storefront Studio 2022 implemented water drainage systems that are functional and beautiful. We aim to create a space that brings together both residents and visitors by adding interactive elements, such as picnic tables, barbecue grills, and food trucks. We added night lighting for safety and ambiance.



Barbecue Grill

Historic Dark Streetlight



Seating



Portable Picnic Table



Planter with Sitting Area



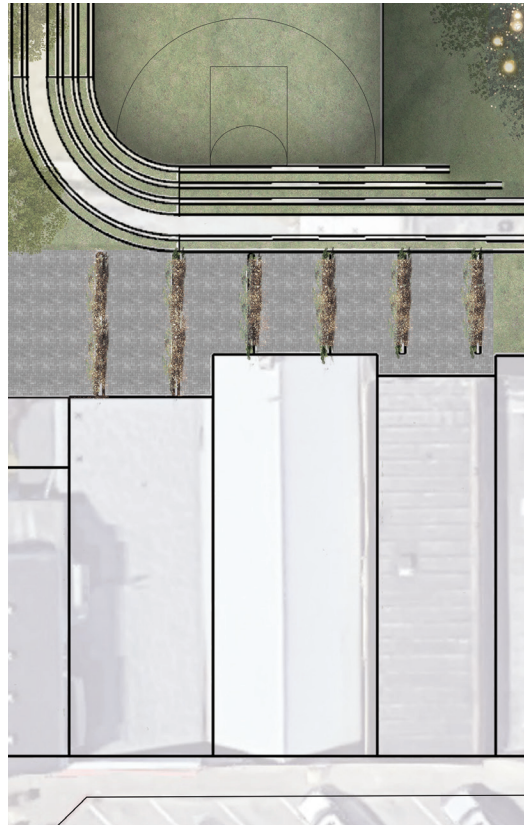
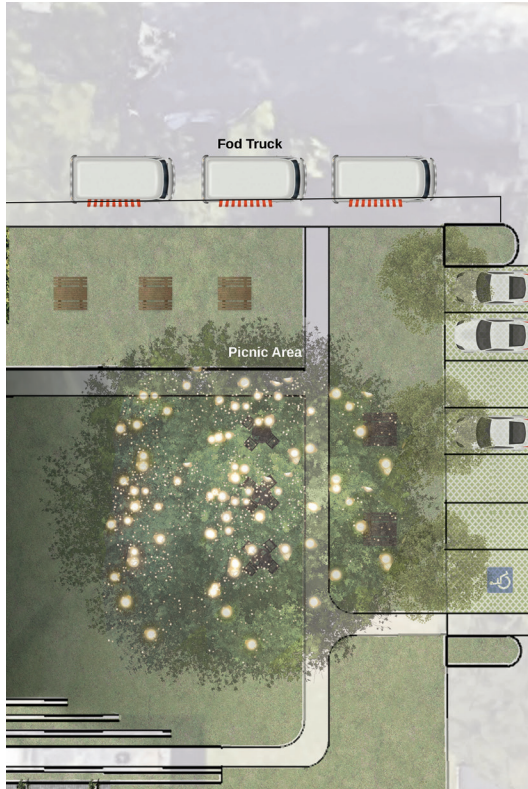
Tall Tree Bench

Food Trucks



Picnic Area

In this area, people can enjoy food from the food truck and the farmer's market. The amphitheater is open to the picnic area. The community can also have a comfortable picnic time under the existing tree canopy. It provides natural shading in the summer. The space is intended to be used during the day and night because the tall tree has decorative lights.

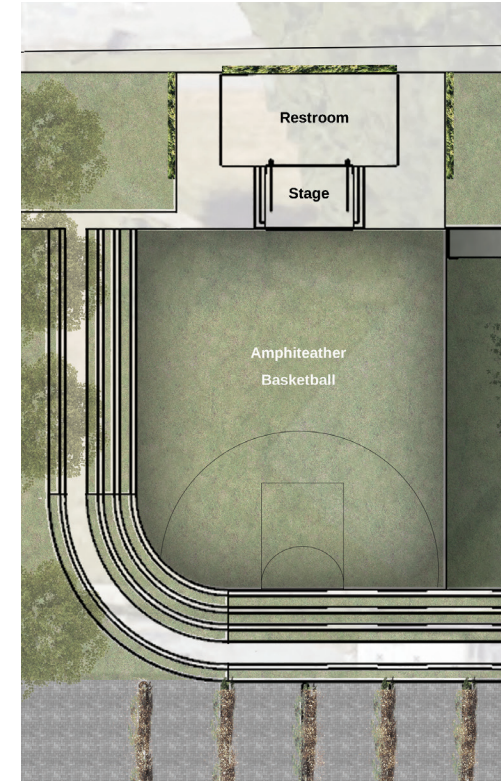


Business Area

This allows the businesses to engage with the park. By placing it next to the park, this offers more opportunities for businesses to grow. The alleyway remains accessible by vehicles to allow businesses to receive shipments. This area is configurable so that businesses can use the space to fit their needs.

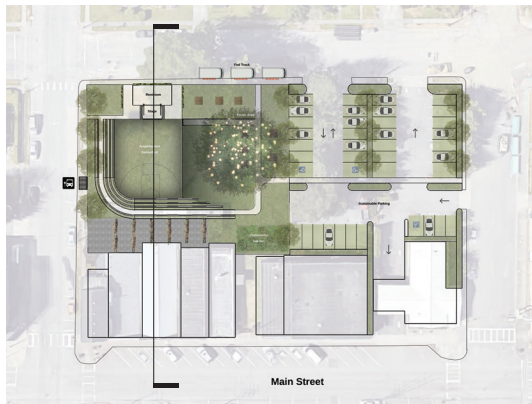
Amphitheater

The amphitheater has a basketball court and a drainage system around the perimeter to collect storm and flood water. The community can use the court and the mini stage to perform their arts, music, or have movies. This space brings the community together by providing a space for various activities for people of different ages.

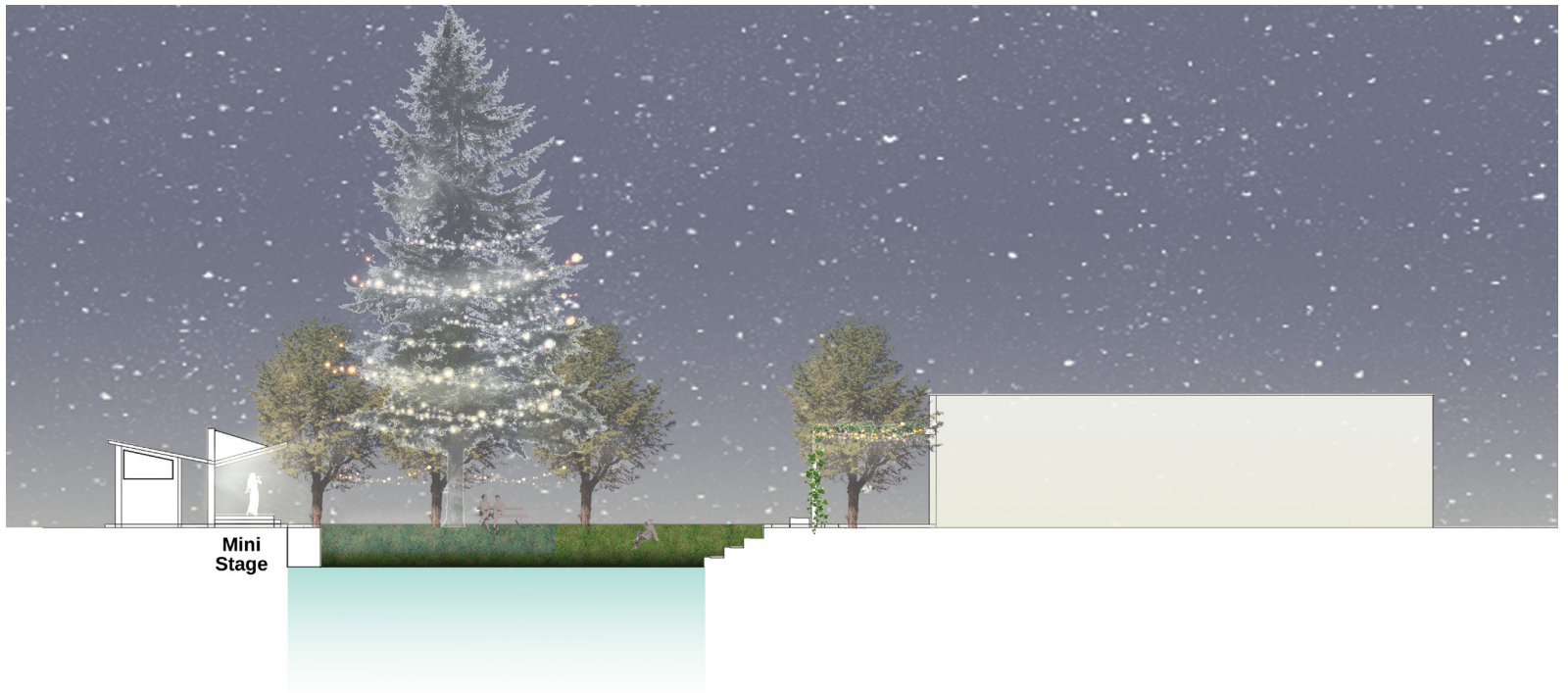


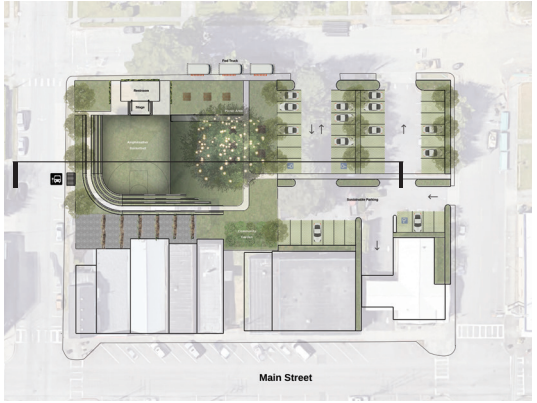
WARNER BLOCK Paved Amphitheater



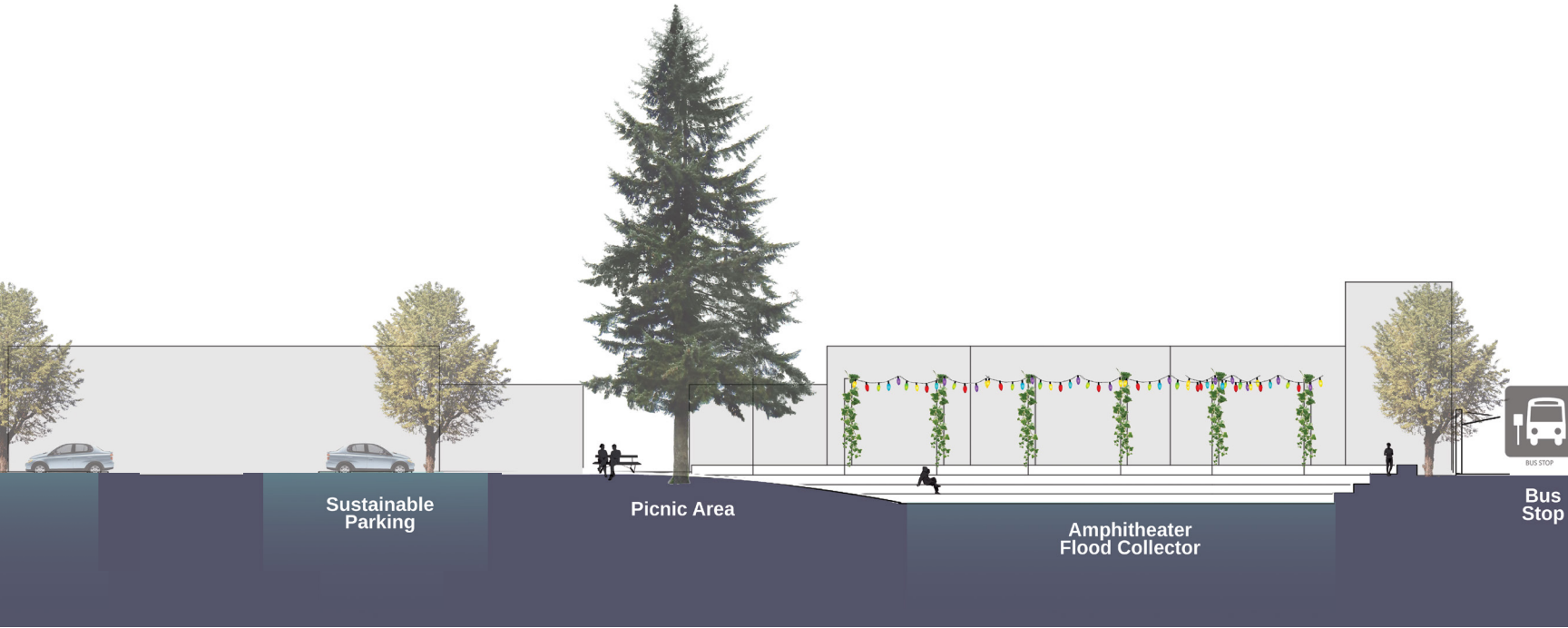


Paved Amphitheater Cross Section - Winter





Paved Amphitheater Cross Section - Summer





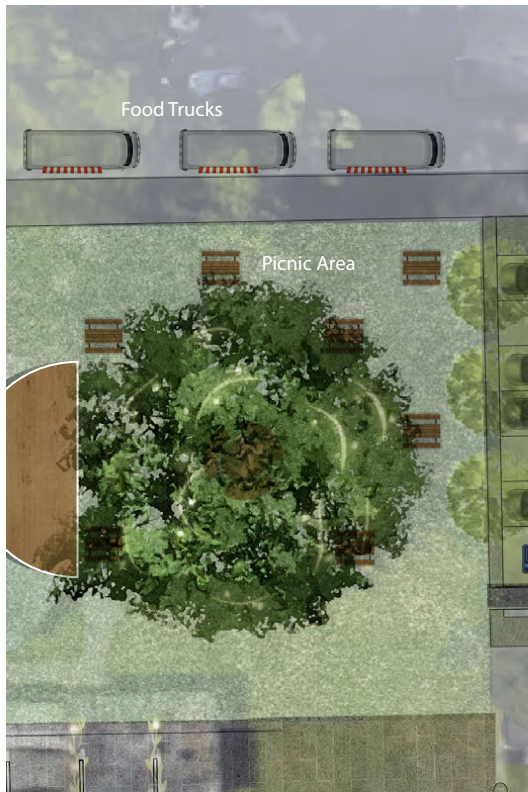
WARNER BLOCK

Paved Amphitheater Perspective Views



Picnic Area

The dining space is in the center of the park around the tall tree. Food trucks can park along the street with other street vendors at a farmer's market. The picnic tables provide a space to eat the freshly made food bought at the event.

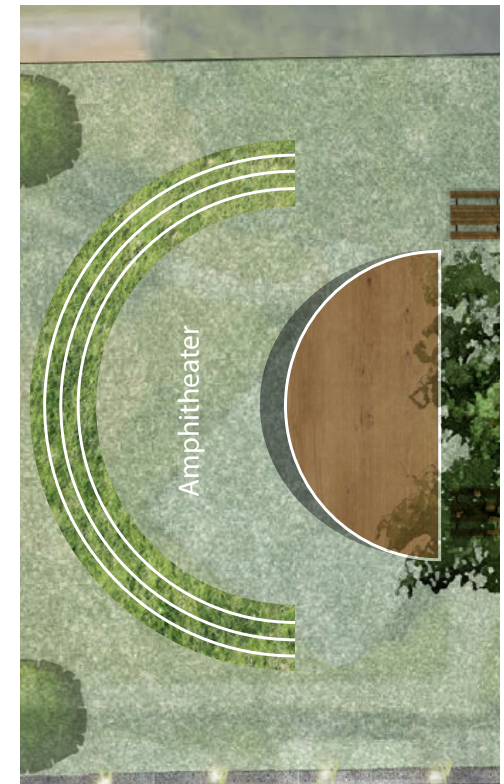


Business Area

The backyard builds connection between the proposed park and the businesses along the Main Street by providing a space to import and export goods. This allows the programs in the park to bring more visitors.

Amphitheater

The amphitheater digs down into the ground and frames the stage. Rainwater and floodwater flow into their central drainage systems. By maximizing the green area, we created more space for live music, dance, and other community events. The amphitheater is also ADA accessible.



WARNER BLOCK

Grass Amphitheater



Main Street



Grass Amphitheater Cross Section - Winter



Grass Amphitheater Cross Section - Summer





WARNER BLOCK
Grass Amphitheater Perspective Views





WARNER BLOCK

Canopies and Awnings

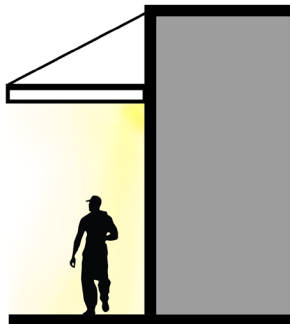


Historic Photo of Warner Block
Canopy Example

A historic photo of the Warner Block shows that many past buildings had canopies with cables and awnings. These architectural elements provide continuous weather protection to pedestrians walking on the sidewalk. Today, many building facades on the Warner Block are flat without any shades from the sun or shelter from rain and snow.

The Sultan Storefront Studio 2022 proposes a strategy to bring these architectural elements to the present Main Street. The renderings in the next pages represent ways we can install lamps and light strips under canopies to make the street brighter and safer at night. Each business could have a different design, as illustrated in the roof plan and elevation on the next page, to emphasize the variety of Main Street.

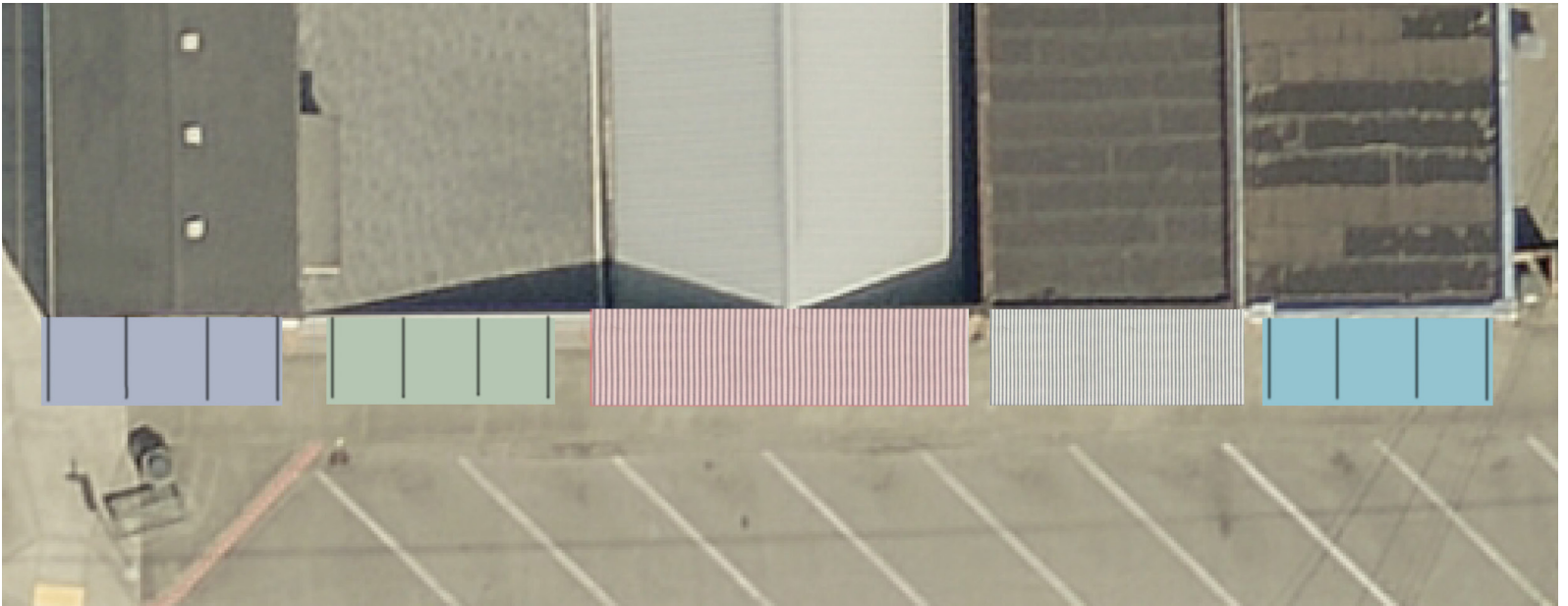
Present: City Hall with Permanent Canopy





Existing





Proposed

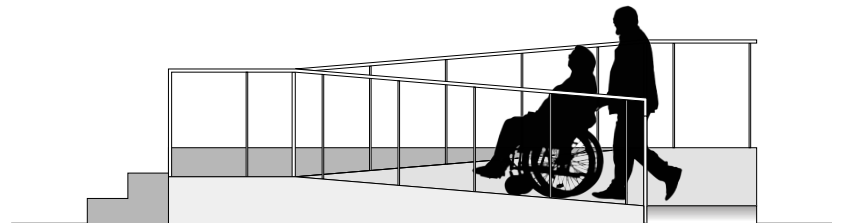


WARNER BLOCK

Kiss the Sky Bookstore



Kiss the sky remains a beloved business at the heart of Sultan. We focused on the missing awning, the ghost mural, and how the rear alley could interact with the proposed park space. In order to accommodate for accessibility an ADA ramp was also included in this design. This design involves the inclusion of a beer garden or cafe at located at the north end of the building.





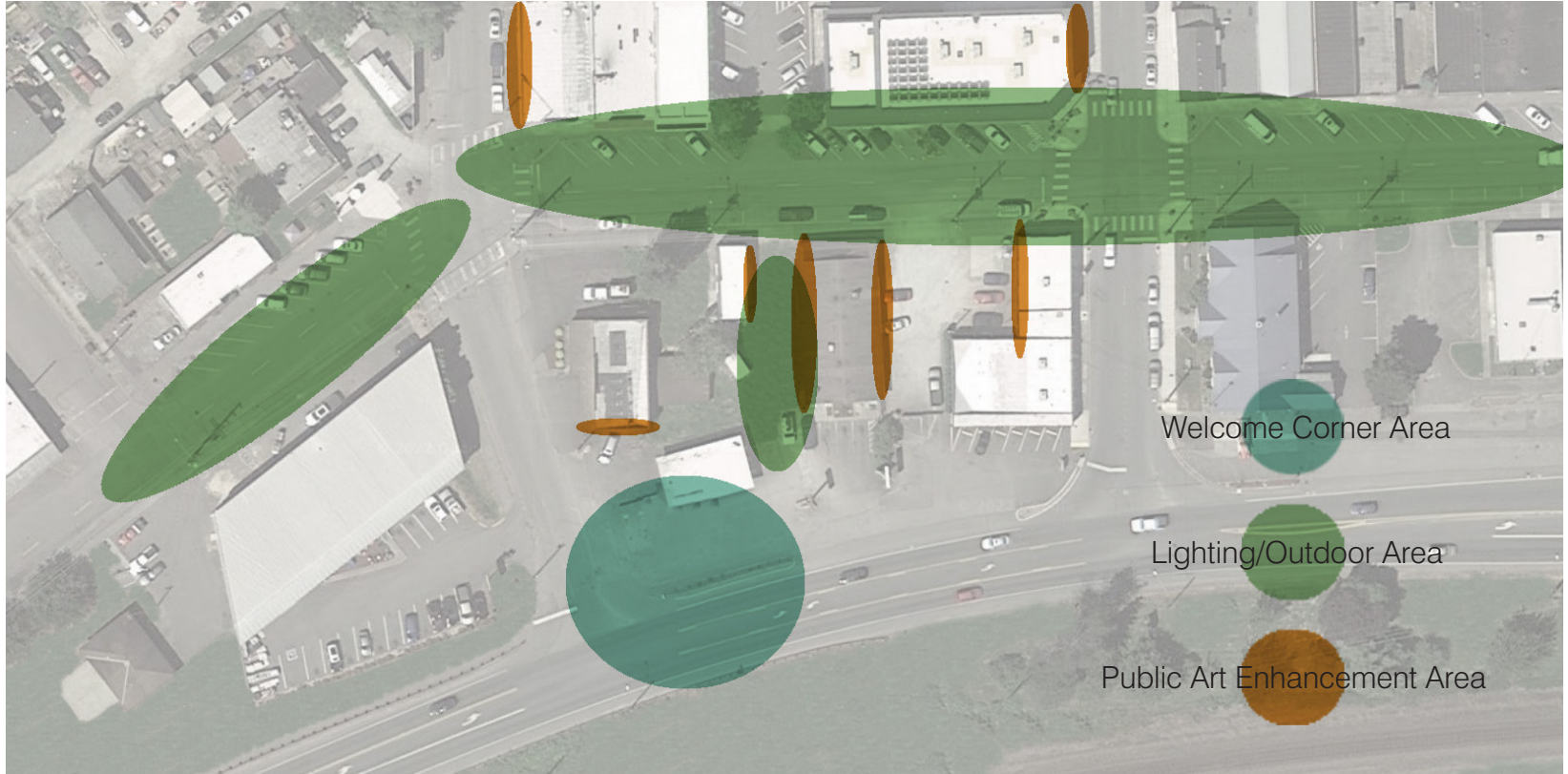


03. MAIN STREET

Main Street Enhancements	85
Welcome Corner	87
Parking	89
Furniture and Lighting	95
Mural Program	109
Community Clock	119

Project Goals:

- Create a Welcoming Space
- Connect to Nature
- Strengthen Sultan's Identity



MAIN STREET Enhancements



Our ideas for Main Street are to create a more cohesive and welcoming space for visitors and citizens alike. To accomplish this we are proposing lighting improvements, specific signage, addition of green space, and additional public art. The Public Art Enhancement Plan focuses on the addition of new and different ideas for public murals that can connect to the modern Sultan, as well as the preservation of existing historical art that throughout Main Street.

The Lighting and Outdoor Seating Plan focuses on creating a connected Main street through lighting conditions and outdoor spaces where people can gather and spend more intimate time in the area. The addition of green spaces along the street to create a greater connection with nature as the City of Sultan is surrounded by mountains and evergreens creating these spaces will bring nature into the city as well.

The Welcome Corner Plan works with the proposed US-2 roundabout that is expected to be added on the corner of 3rd Street and US-2. This includes the ideas set in the first to plans to create an exciting and intriguing guide into Main Street, Sultan.



Before



Day



Night

The most important part of the Welcome Corner Plan is the corner itself. With the future roundabout in mind bioswales are a great opportunity to reduce flood impact on Main Street. There are 5 major bioswale opportunities in the area with the largest one being the space inside the proposed roundabout itself.

Coupled with the flood water management the bioswales also add a more green aspect and are an opportunity to bring in some more planting to the area. Along with this comes a pedestrian sidewalk where locals and visitors can take a stroll safely by US-2 and get up close to the newly added biodiversity, while Curston's Distillery and the nearby D.N.D. Glass building make a perfect space for additions to public art as well as unique lighting conditions.

The potential of the open space is limitless and can be converted to many outdoor events such as a small market or beer garden.



After

MAIN STREET Welcome Corner Plan

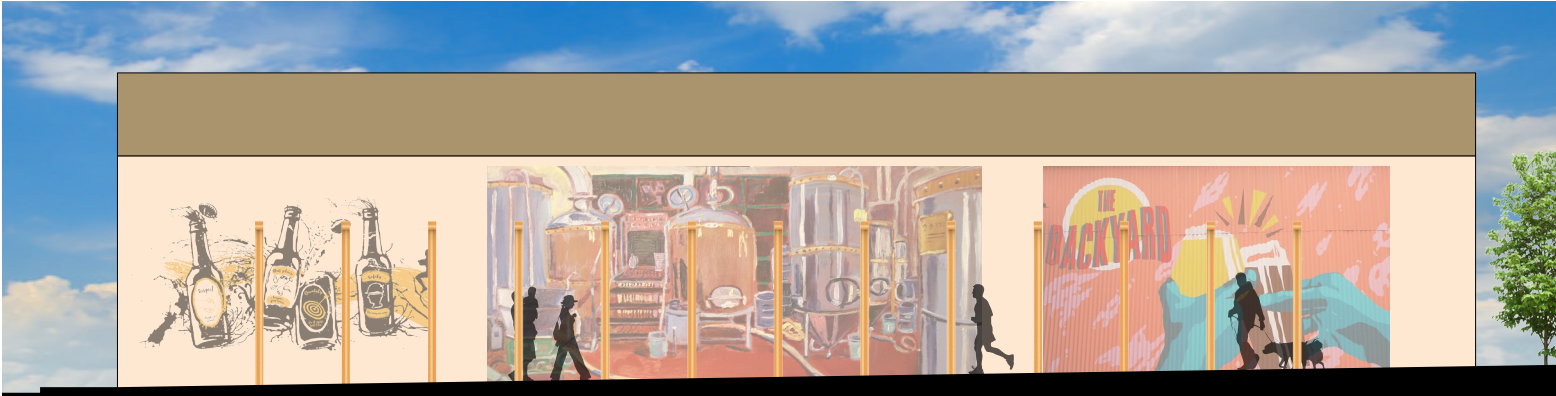


The Welcome Corner encompasses the corner of 3rd Street and US-2. This area, although small, has much potential to bring in visitors and passersby into Main Street Sultan. With the future addition of the roundabout in mind we want to create a space that not only contributes to the outdoor aspect of the city but draws people to come into Sultan, visit local businesses, and have new experiences. Starting with the more Main Street facing side of the block, the area between Curston's Distillery and the Sultan Liquor Store is a great opportunity to create an open outdoor space for walking, picnics and other activities.



“There is no power for change greater than a community discovering what it cares about”

-Margaret J. Wheatley



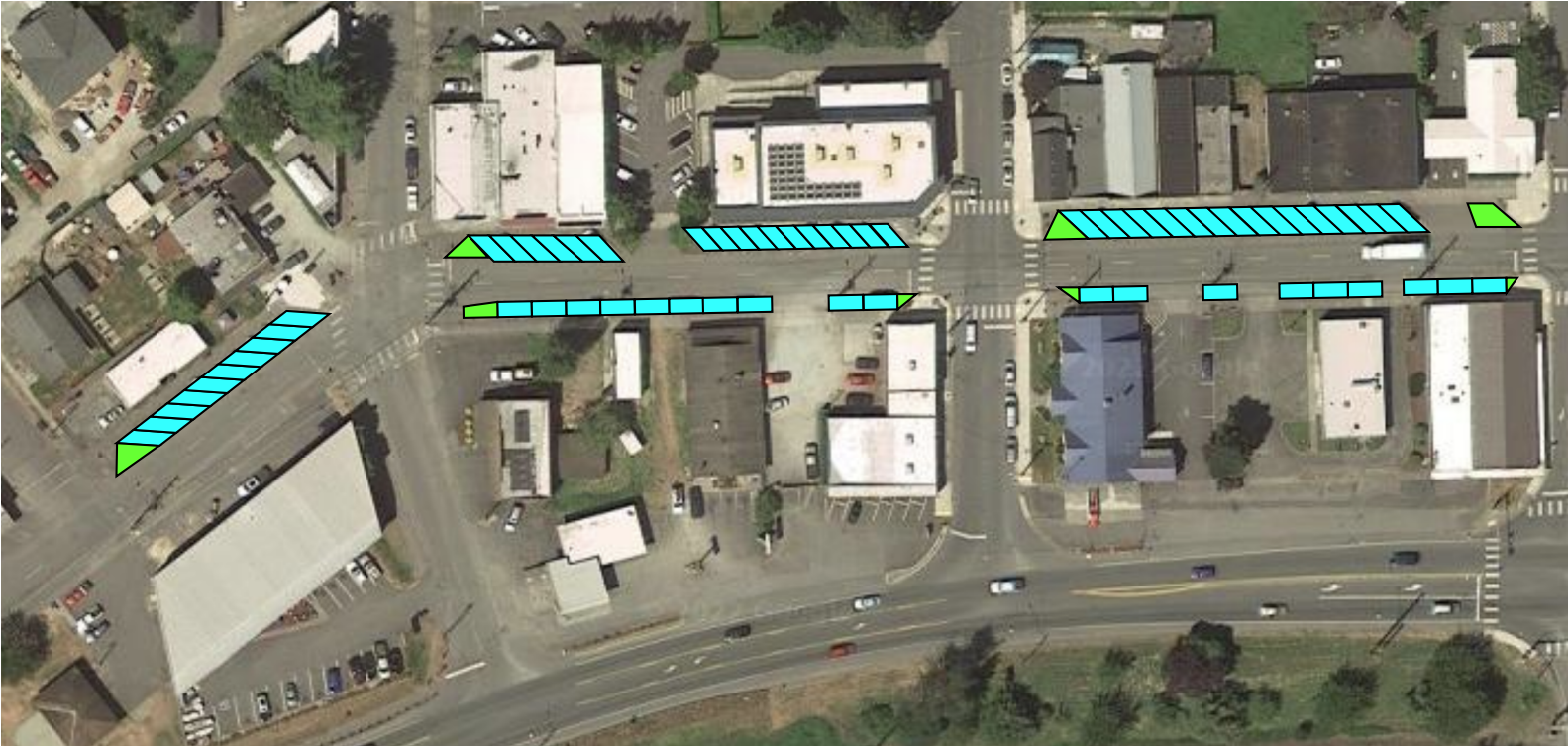
Existing Street Parking

There are a total of 62 parking spots located on Main Street that range from 2nd Street to 5th Street. All of the blue spots are current parking spots and the green spaces are unused areas on main street that have been left over from the division of parking spots.

One of the plans to increase the pedestrian experience of Main Street involves removing parking spots and transforming them into greener and pedestrian friendly areas. 16 of the 66 parking spots will be transformed into areas with benches, trees, plantings, and exterior lighting. This

will provide the community with additional places to eat, talk, and meet at while being in the center of the city. The new green spaces will increase tourist attraction as well as help businesses gather more consumer traffic as they will be able to serve more customers and provide them a place to sit.

- Existing Parking █
- Unused/Leftover Space █





Street Parking and Green Spaces

This image shows 16 spots that could be transformed into green spaces in order to enhance the pedestrian experience on Main Street. A few of these locations incorporate the unused spots shown on the previous page in order to gain extra space. All of the blue spots on this image will remain street parking.

and a few of them are located near other business establishments.

These transformed spaces are spread out evenly throughout Main Street with the consideration of what parking spots are needed most. Many of these spaces are located outside of restaurant locations

MAIN STREET Transformation of Street Parking

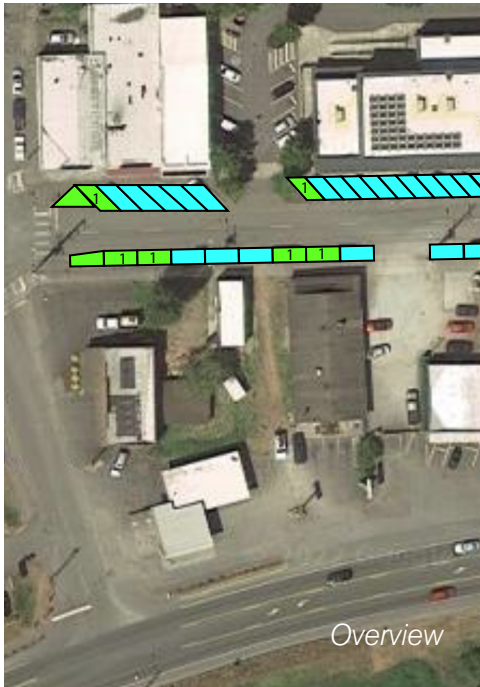
Existing Parking 
Green Spaces 



Loggers Bar and Grill



Incoming Pizza Parlor Storefront



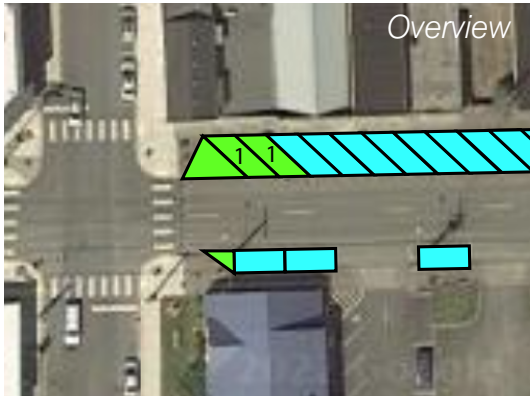


Before

Kiss the Sky Bookstore



After



Overview

Good Brewing Restaurant



Before



After



Hawke's Law Firm Office

Before



After

Existing Street Furniture Materials Study



Metal



Wood



Wood



Foliage



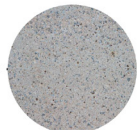
Wood



Concrete



Recycled Plastic



Concrete



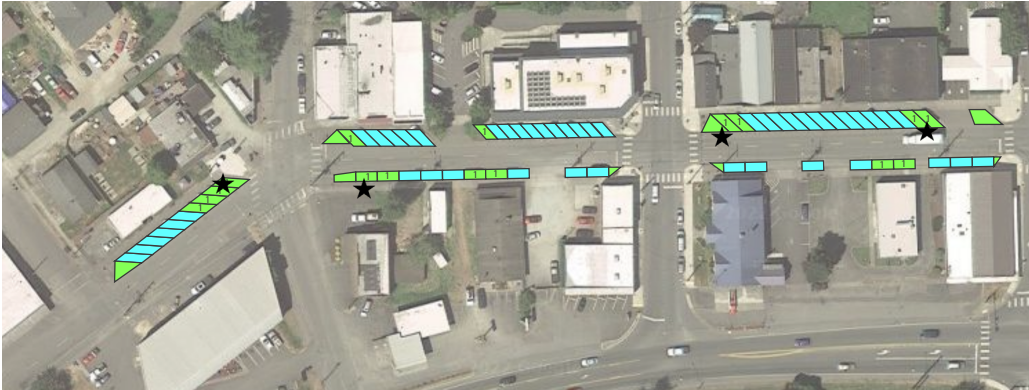
The street furniture designed for the project is intended to make Main Street a cohesive and welcoming. It has materials similar to the ones already present, with a focus on wood that is available locally. The designs are made with the goal to be constructed locally by Sultan's Public Works to celebrate the skills of the community and reflect the city's rich natural heritage.

MAIN STREET Furniture and Lighting Improvements

Project Goals:

- Create Inviting Spaces
- Engage Locals + Visitors

Map of Main Street Furniture Locations with New Parking Adjustments

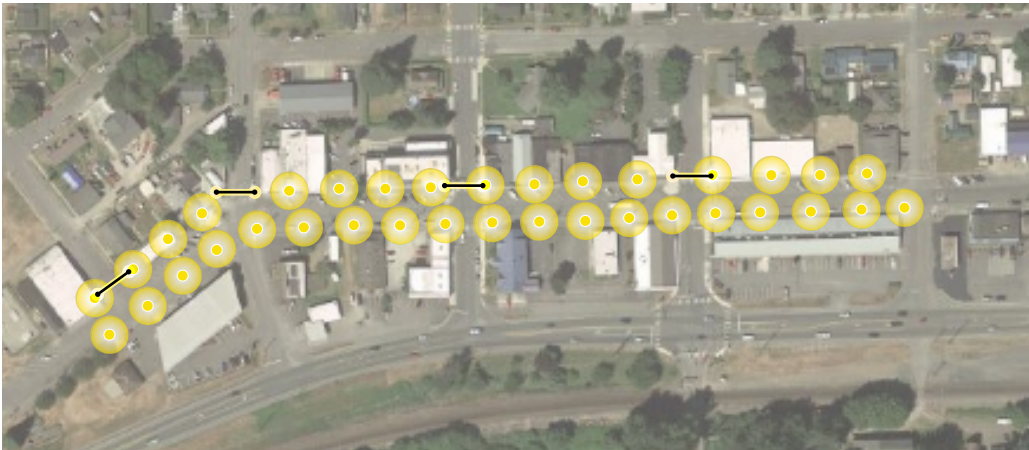


- - Street Parking Spaces
- - Green Spaces
- - Buffer Space
- ★ - Street Furniture Locations

Multi-Function Outdoor Furniture

The Street furniture placed along Main Street will provide resting spaces for townspeople and guests alike. The aim of their design is to serve more than one purpose, such as a bench with a trash receptacle, planter, or bike rack. The materials that they will be built out of will primarily consist of local wood to match the existing furniture and landmark and celebrate its meaningful history to the city. The design is such that the Sultan Public Works will be able to construct.

Map of Main Street Lamp Lighting Placement



Mixed Outdoor Lighting Fixtures

The Sultan Main street lighting strategy focuses on pedestrian-scale and welcoming lighting sources. The street lamps are 9 feet tall at the lowest height in standard street lamp height. Ground lights as well as tree string lights add to the ambient lighting experience. The lighting sources will originate around designated green spaces with seating to create soft and well-lit areas.

- ➡ Light Gateways (see next page)

Sultan Bridge Precedent

The image is a historical photograph of the city of Sultan's original suspension Bridge used to cross the river whose cable pattern inspired the design of the lighted gateway.



Sultan City Suspension Bridge



Night



Lighted Gateway Design

The design for the light gateway is inspired by the cable pattern seen on the original Sultan drawbridge. The longest spanning cables hold string lights that welcome civilians and visitors into Sultan. They can be placed along any desired intersection in the city.

Materials: Metal, String Lights

Materials: Wood, Concrete, Metal



Before



Day

Night View

A nighttime view of the lighting fixtures incorporated into the Bench 1 design as well as additional street lighting. The trees placed in the planter component of the bench will be strung with small lights that will create a soft glow in the dark. The addition of ground lights along the pavement as well as a pedestrian-scale street lamp add to the overall brightness.



Night



Bench 1 Design

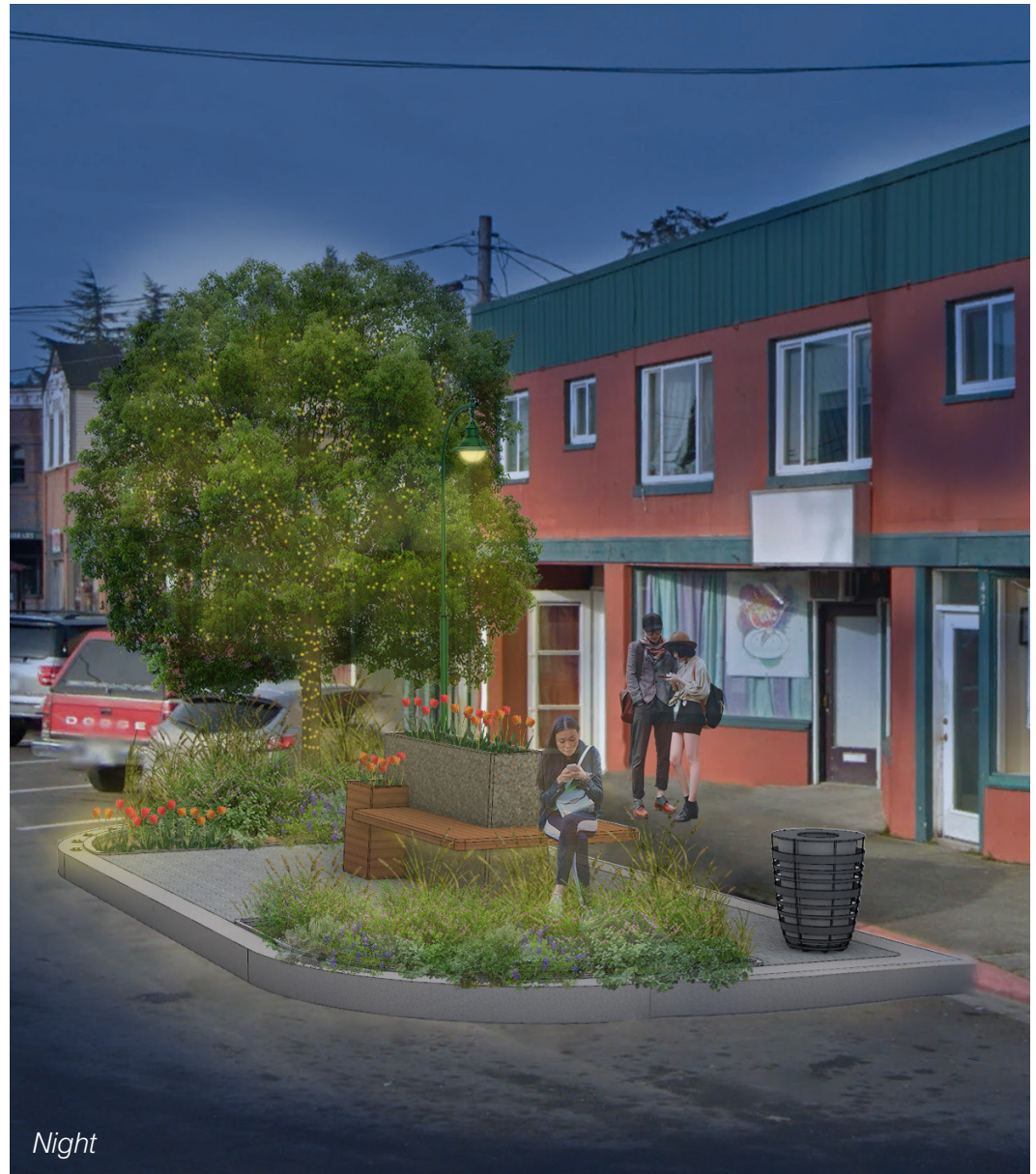
The design for Bench 1 features a tree planter with siding that serves as bench seating that wraps around to maximize occupancy. It is meant to be placed on the North Side of Main Street where there are no power lines that pose a risk and to provide maximum sun shading for the sidewalk and Main Street businesses, while not blocking higher building signage.

Materials: Wood, Metal

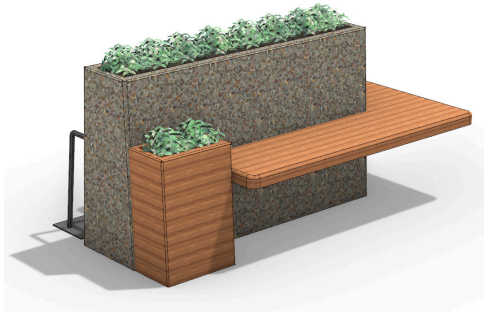


Night View

The night view shows the incorporated pedestrian-scale lighting such as the street lamp, ground lights along the landscaping, and the string lights on the planted tree. The result is soft yet well-lit, safe, and attractive.



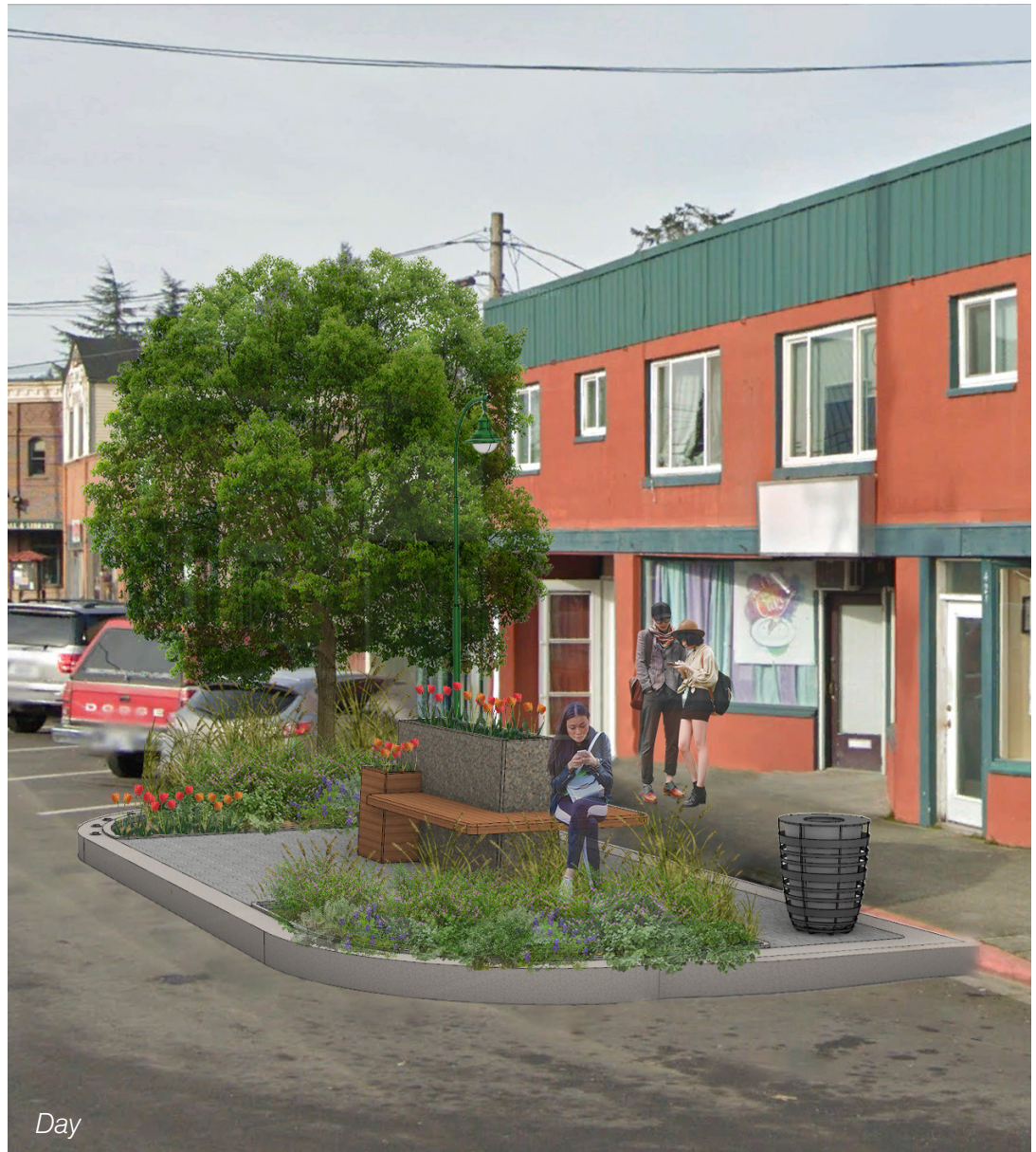
Night



Bench 2 Design

The design for Bench 2 has two intersecting planters as the backrest as well as a small bike rack on the back. Seating wraps around three sides to maximize use. It can be placed on either the North or South Sides of Main Street due to its low profile.

Materials: Wood, Concrete, Metal



Night View

The night view shows the well-lit conditions placed by the street furniture. Ground lights are located around the landscaping and a street lamp is the primary source of lighting. Since this particular perspective is situated along the South side of Main Street, there are no street trees with string lights due to the presence of power lines.



Night



Bench 3 Design

The design for Bench 3 consists of a traditional wooden bench with a planter incorporated as the backrest. The back of the bench has several bike racks. It can be placed on either the North or South side of Main Street.

Materials: Wood, Metal

Materials: Wood, Concrete, Metal



Night View

Night view of the lighting conditions of the sidewalk patio. An abundance of string lights can make it brighter or softer depending on the specific lighting ambiance desired. The lighting strategy promotes evening dining.

Precedent Project

The image is a sidewalk patio intervention built during the pandemic to promote outdoor dining. It also contains string lights for soft lighting.

Materials: Wood, Concrete, Metal



Night



Sidewalk Patio Design

The design for the sidewalk patio focuses on providing an inviting and productive use of space to be used for dining. It has a light but sturdy frame with a trellis covering that holds string lights as well as foliage.

Materials: Wood, String Lights

Materials: Wood, Concrete, Metal



Before



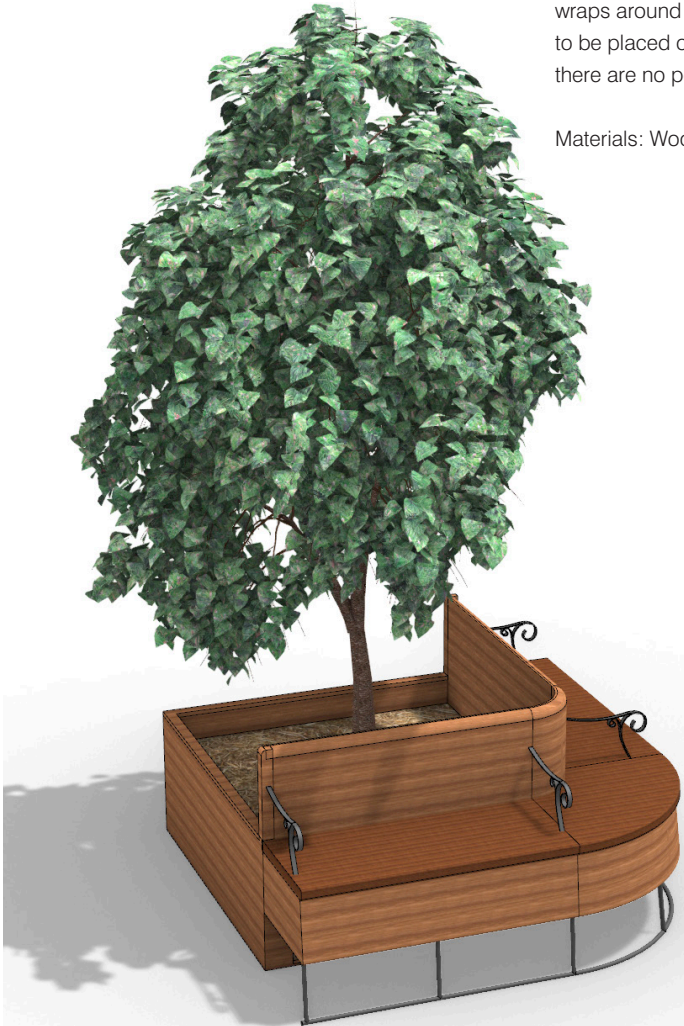
Day

Bench 1 Design

The design for Bench 1 features a tree planter with siding that serves as bench seating that wraps around to maximize occupancy. It is meant to be placed on the North Side of Main Street where there are no power lines that pose a risk

Materials: Wood, Metal

**note: drawings not to scale*

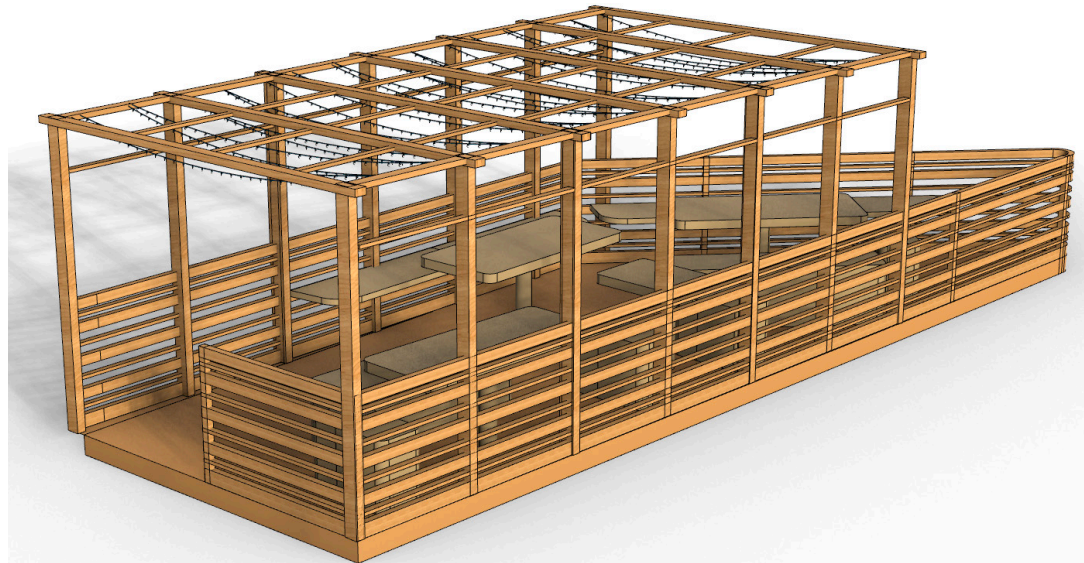
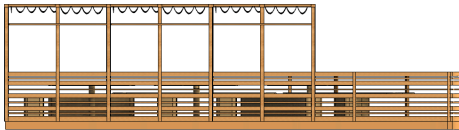
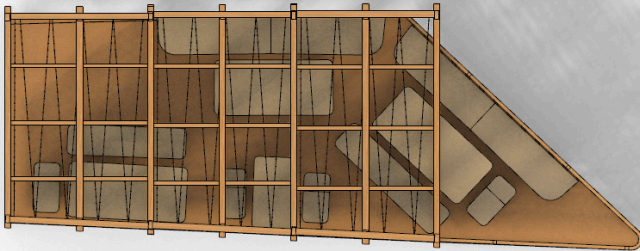


Sidewalk Patio Design

The exterior dining area is composed of wood with a trellis covering that hosts string lights to provide soft lighting at night. The open covering can also hold seasonal plants that provide shading during warm seasons. Heaters and translucent canopies can be added as well. Seating is varied in size and meant to be adjusted to accommodate various numbers of people.

Materials: Wood, String lights

**note: drawings not to scale*



Mural Locations

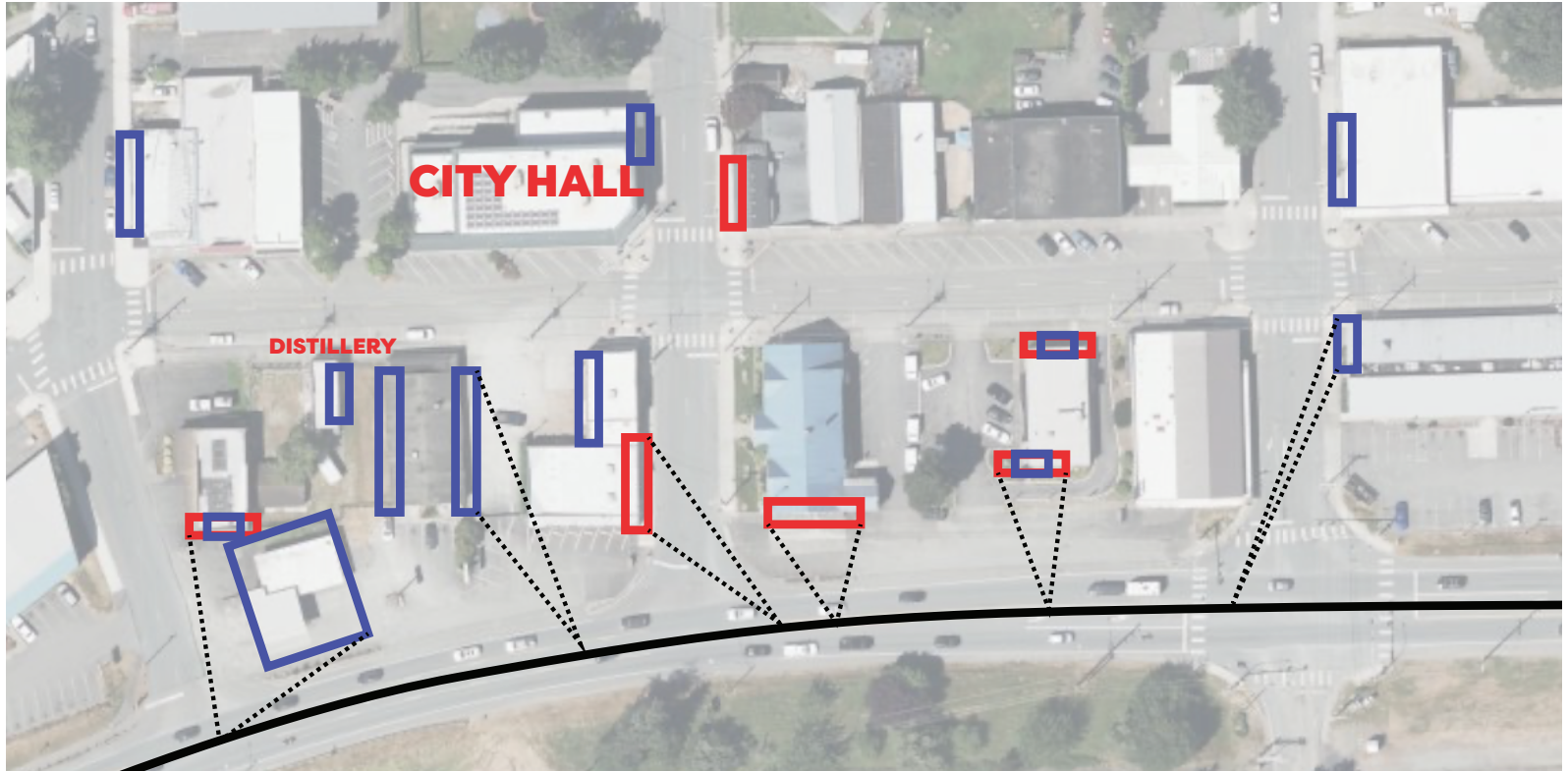
Studies show that public art has a host of benefits for communities. Its community-building powers can combat feelings of anxiety and social isolation. When locals participate in creating public art, these effects are amplified. A 2018 London-based survey found that 84% of respondents believed participating in public art projects benefited their well-being.

One of the most meaningful effects of public art is that it creates what urban designer Mitchell Reardon calls “community fingerprints”—spaces that make people

feel represented, foster community ties, and give people a sense of ownership and belonging in their neighborhoods. Moreover, inviting out of town artists can bring positive publicity while creating larger regional ties to other cities. Indigenous artists can have an opportunity to be seen.

 Existing Murals

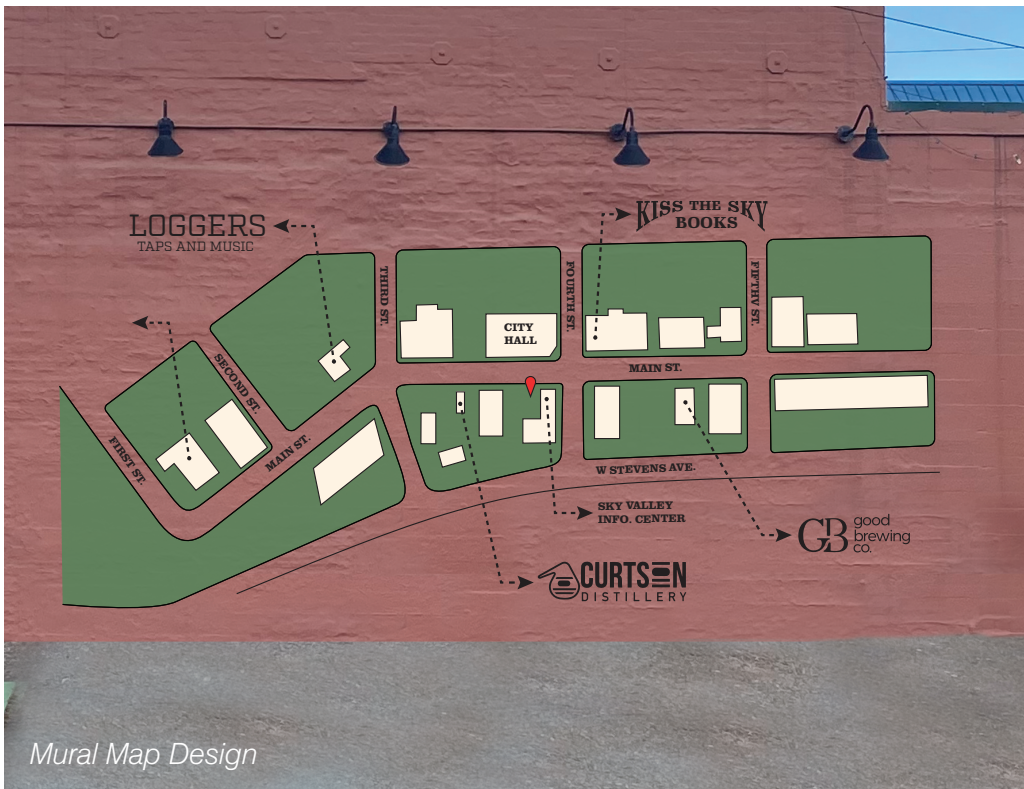
 Possible Mural Walls



MAIN STREET Mural Program



Mural Map Location



Mural Map Design

At the local level, the arts can be an effective tool of economic development. Sultan has a great opportunity to build on its already strong public art presence. Adding art to buildings is an inexpensive solution to attract visitors and new business. Public Murals also give the Sultan a chance to express the strong character of the town by inviting the community to contribute. Having steady rotation of murals allows for widespread contribution and investment in the broader image of Sultan. The pragmatic opportunity of wayfinding can be enhanced through a mural program.

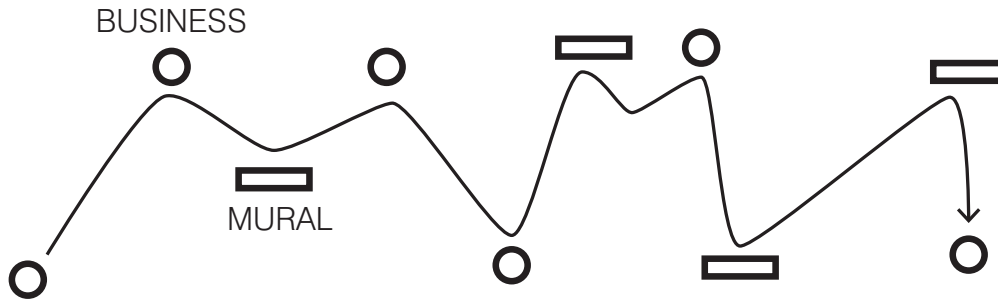
“Murals, in particular, are great for artistic placemaking and city marketing.”

- Yes! Magazine



Sultan Station Mural on Sultan Chiropractic

Incorporating Existing Murals



Public art also provides economic benefits, including new jobs and increased tourism. Murals, in particular, are great for artistic placemaking and city marketing. It's no surprise that art-focused bus and walking tours have grown popular in dozens of cities in recent years. A public art walking tours gives visitors incentive to explore Sultan and its businesses.



Post Office Mural of Firefighters



Smokey the Bear Mural Concept

Public art can be a glimpse into Sultans rich history. The Black Bear Clothing ghost sign on the east wall of Kiss The Sky Books is a primary example of public art that needs to be preserved, repaired, or reimagined. A "restored" version of this sign is illustrated below, but an alternative would be a clear vandal and UV protective coating to the existing ghost mural.



Black Bear Mural on Kiss the Sky Bookstore

SULTAN SHINDIG SHOW & SHINE



Sultan Shindig Mural Concept

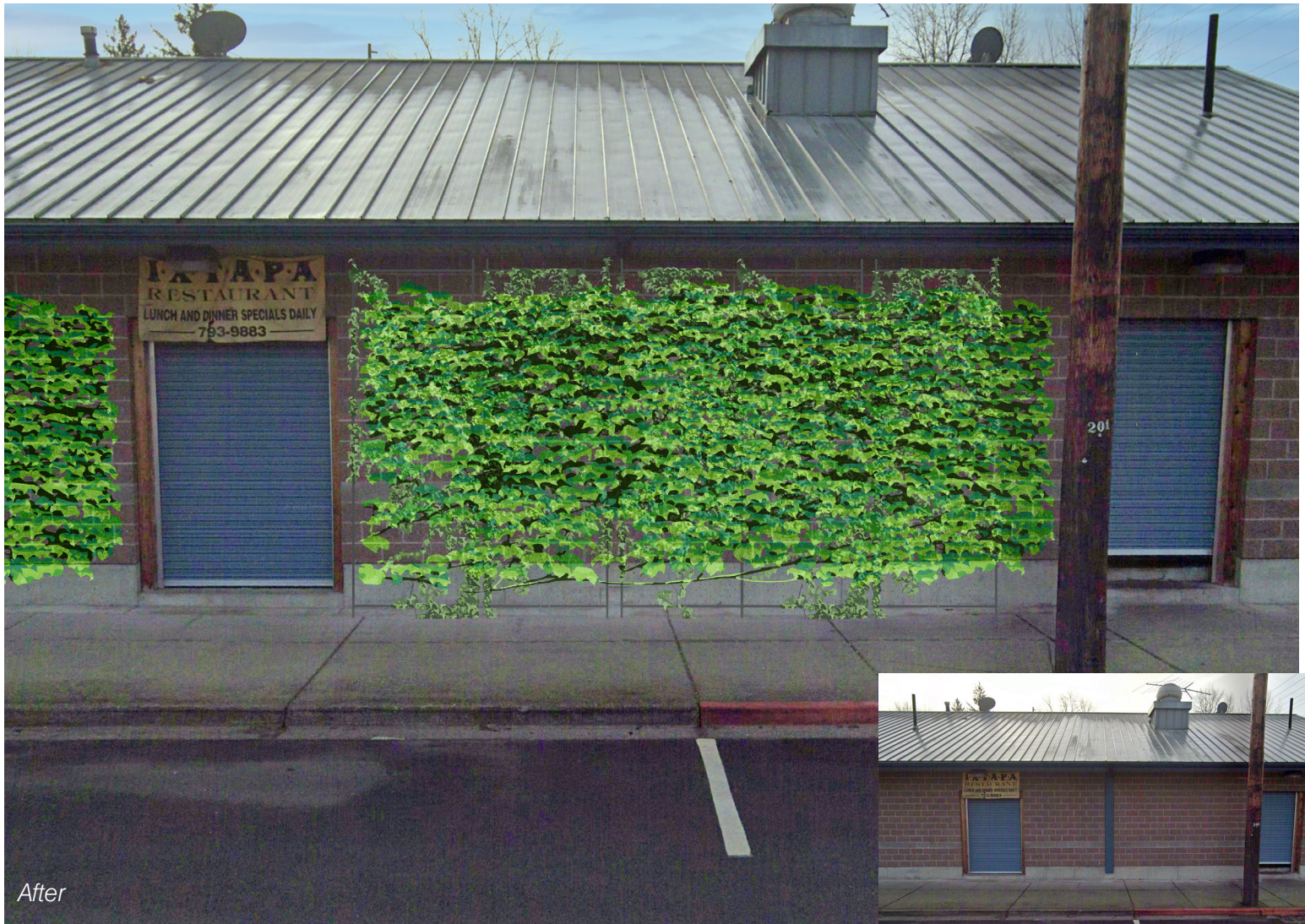


SULTAN

WASHINGTON



Sultan Suspension Bridge Mural Concept



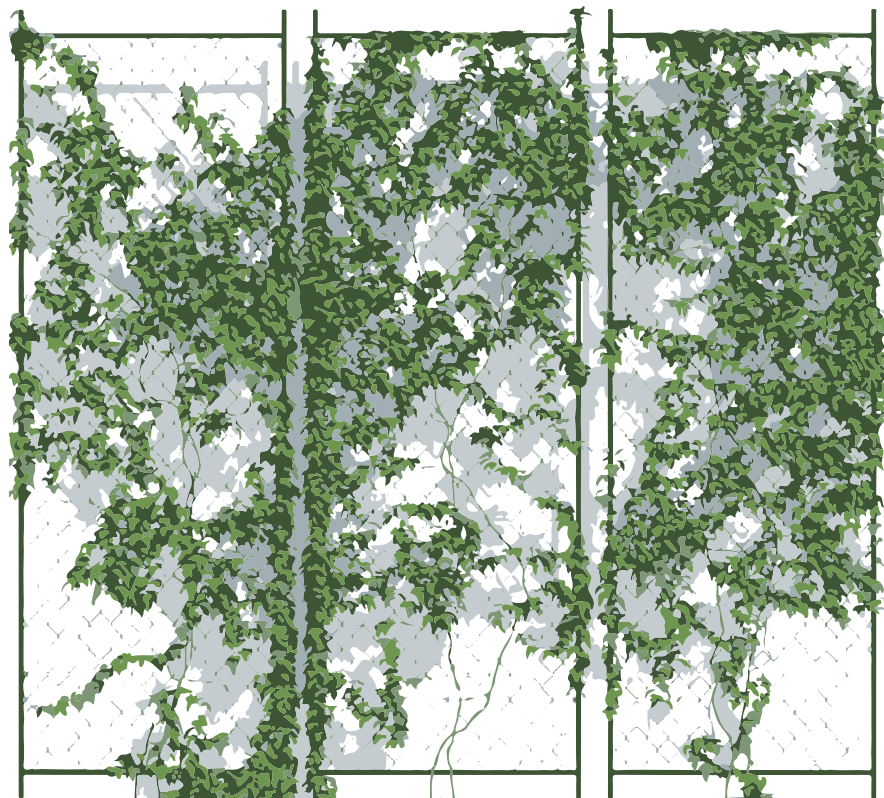
After



Before

Green Mural

Not all community improving murals need to be made of paint. Green murals or vertical plantings can cover unsightly buildings, beautify streetscapes, and decrease solar heat gains in summer.





Before



After

MAIN STREET Community Clock

This shows the value of adding a large community clock to the space outside of the Sultan Sheriff's office on Main Street. The clock installation can also be community art, as shown by the chainsaw carved wooden bear clock.



After



Froy Contreras



Grace Lis



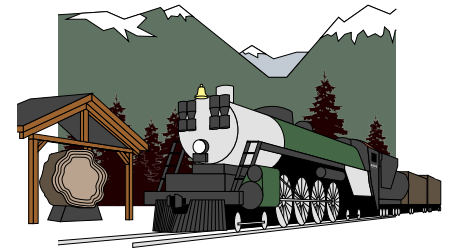
Greta Dubois



Trinh Nguyen



Luke Barbieri



SULTAN WASHINGTON

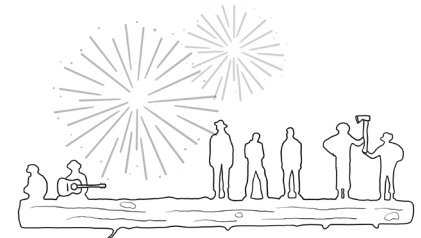
Kiel Scharbach



Kana Takagi



Jack Kirtley



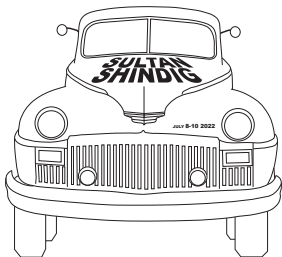
SULTAN WASHINGTON

Vicky Che



Samara Ortega Amador

In order to begin to research and understand the City of Sultan, we started with a tourist T-shirt design and applied what we learned from the online and web-based research into these designs. After actually meeting with the community, we refined them and reflected more about our experience and impressions of Sultan.



Steph Strong



Angus Batstone

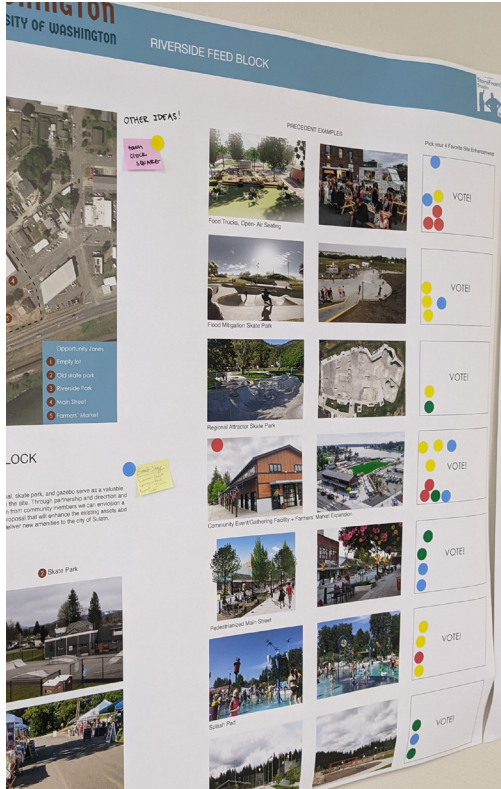


Taiz Garcia



Storefront Studio 2022

City of Sultan, Main Street Open Houses



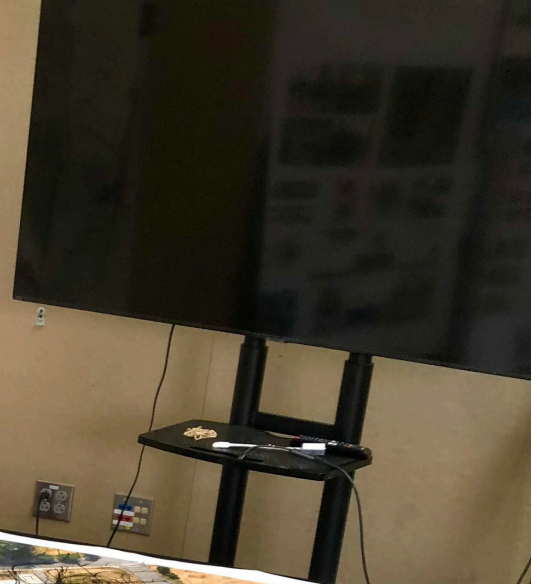
Thank you to all of the community members and local business owners who attended our initial community meeting, and three open houses. Your feedback was invaluable in directing the student projects for this studio!

Each open house was hosted at 413 W Main Street in the new Compass Financials Sultan Office. Lori and Patricia were kind enough to donate the use of their space - and provide beautiful snacks for the students!



Handwritten notes and diagrams on a white sheet of paper, including a small site plan and a list of bullet points.

- 1. The site is located in a high-traffic area.
- 2. The building footprint is approximately 100x150 feet.
- 3. The site is currently vacant.
- 4. The surrounding area is a mix of commercial and residential.
- 5. The proposed development is a multi-story office building.
- 6. The building will include a parking garage.
- 7. The site is adjacent to a major road.
- 8. The building will be designed to be energy-efficient.
- 9. The site is zoned for commercial use.
- 10. The building will be a landmark structure.



SPECIAL THANKS to...

“Downtown Sultan has so much potential to be a place for people to gather and support our community and local businesses. **The UW Storefront Studio helped us envision what that could look like.** The students worked closely with local residents, businesses, and property owners to create a product that reflects our community and priorities. I look forward to working with our City Council and community to implement this plan for our downtown.”

- **Russell Wiita, Mayor, City of Sultan**

“We have been working on downtown revitalization for a long time and it’s REALLY hard to get people to see or imagine what things could look like with some improvements. **Working with the UW Studio has helped people see just how amazing Sultan could look** from the fresh perspective of UW students working with our community. I highly recommend the UW Studio experience!”

- **Debbie Copple, Director, Sky Valley Chamber of Commerce**

Project Facilitators:

Just some lovely people who believe in the City of Sultan and helped a lot with making Storefront Studio 2022 a success:

- Debbie Copple
- Melody Dazey
- Russell Wiita
- Andy Galuska
- Will Ibershof
- Lori and Patricia at Compass Financials
- Jack Stepanek

Contacts:

www.storefrontstudio.org

Jim Nicholls

Director of Storefront Studio
Department of Architecture
College of Built Environments
University of Washington
jnicholl@uw.edu

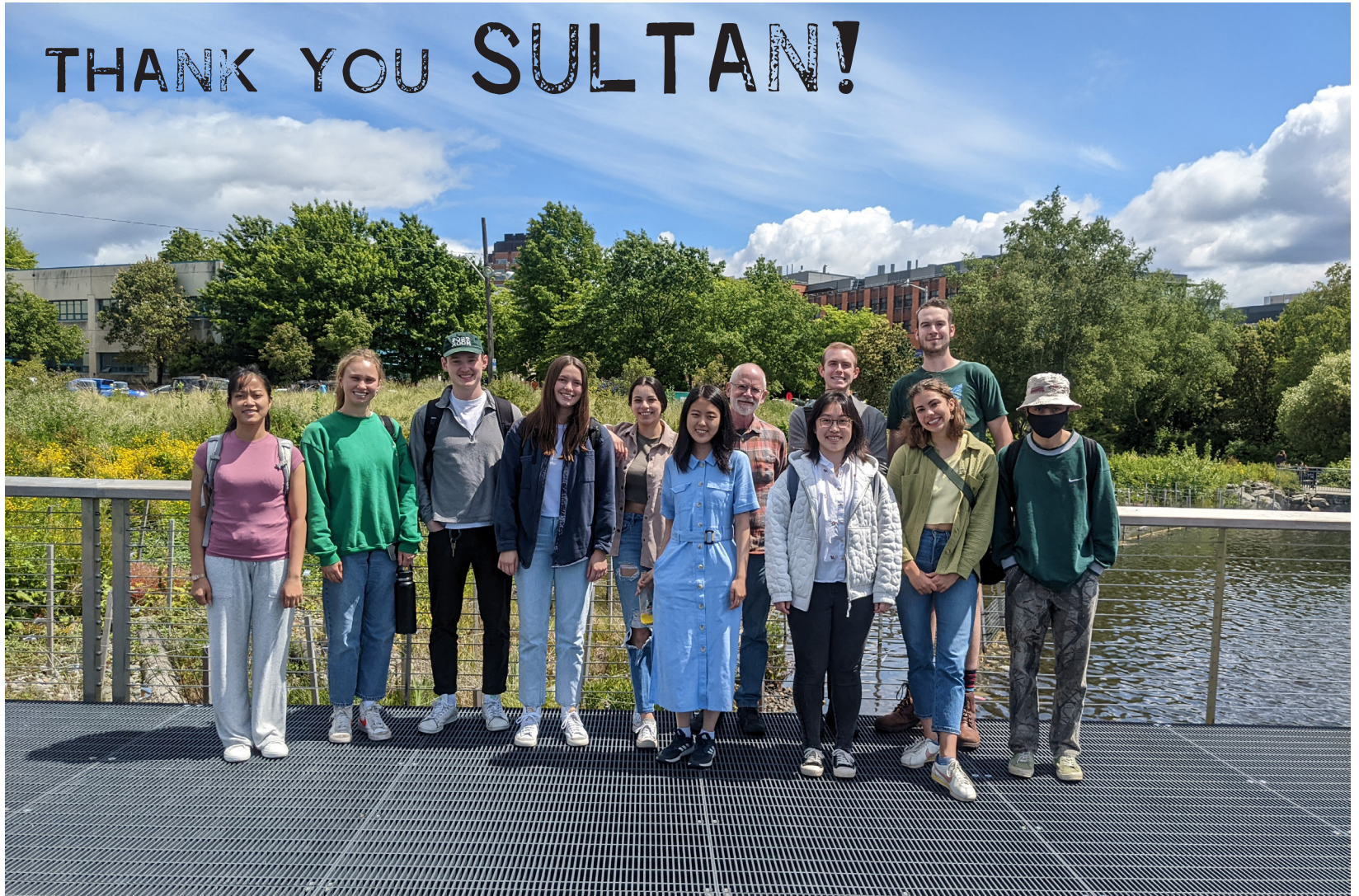
Christine Olshefsky

Studio Assistant
Book Editor
Sultan Resident
University of Washington Alum., 2014
www.christineolshefsky.com

Sky Valley Chamber of Commerce

Debbie Copple
Melody Dazey
www.skyvalleychamber.com

THANK YOU SULTAN!



In alphabetical order: Luke Barbieri, Vicky Che, Froy Contreras, Greta Dubois, Taiz Garcia, Jack Kirtley, Grace Lis, Trinh Nguyen, Kiel Scharback, Steph Strong, Kana Takagi.

Not photographed: Angus Batstone, Samara Ortega Amador, Christine Olshefsky (studio assistant)

